

PLAN PREPARATION

DISTRICT PROJECT MANAGER: DAVID J. PARKER, P.E., CBSI.
 PENNONI PROJECT MANAGER: MATTHEW R. PARRISH, P.E.

DISTRICT	COUNTY	TOWNSHIP	BOROUGH	ROUTE	SECTION	TOTAL SHEETS
12-0	WESTMORELAND	HEMPFIELD	YOUNGWOOD	T-184	EHS	12

MPMS NO. 31918

YOUNGWOOD BOROUGH

DRAWINGS FOR CONSTRUCTION OF

EAST HILLIS STREET

IN WESTMORELAND COUNTY

FROM STA. 1+20.00 TO STA. 6+55.00 LENGTH 435.00 FT. 0.082 MI.

PUC APPLICATION DOCKET NUMBERS A-2017-2636252 & A-2018-2644238

ALSO INCLUDED:

TRAFFIC CONTROL PLAN	3 SHEETS
SIGNING AND PAVEMENT MARKING PLAN	2 SHEET
EROSION AND SEDIMENT POLLUTION CONTROL PLAN	7 SHEETS
STRUCTURE PLAN (L-45)	43 SHEETS
CROSS SECTIONS	8 SHEETS

SCALE



DESIGN DESIGNATION

ROADWAY TYPOLOGY - LOCAL ROAD
 SUBURBAN NEIGHBORHOOD
 HIGHWAY CLASSIFICATION - URBAN LOCAL ROAD
 DESIGN SPEED - 25 MPH (25 MPH POSTED)
 PAVEMENT WIDTH - 22'-0" (2-11' LANES)
 SHOULDER WIDTH - 4'-0"

TRAFFIC DATA

CURRENT A. D. T. 3,406 (2019)
 DESIGN YEAR A. D. T. 3,552 (2039)
 D. H. V. - 391
 D - 50%
 T - 9.99%

PREPARED BY:
 PENNONI ASSOCIATES INC.
 680 PITTSBURGH ROAD
 SUITE 2
 UNIONTOWN, PA 15401



Matthew R. Parrish
 REGISTERED PROFESSIONAL
 ENGINEER
 DATE: 9/12/2019

RECOMMENDED DATE: 9/17/19
Joseph J. Chesur
 DISTRICT EXECUTIVE

APPROVED DATE: 01/14/2020
Deane M. Schayer
 YOUNGWOOD BOROUGH

PENNONI ASSOCIATES, INC.
 FILE NAME: V:\1918\CONSTR\COORDINATOR.DWG
 USER: J. SCHAYER
 MICROSTATION WORKSPACE: PENNONI\JVS
 PENN: JVS
 DATE PLOTTED: 9/17/2019 @ 9:58:05 AM
 USER NAME: JVS

RECORD OF EXISTING ROAD TYPES

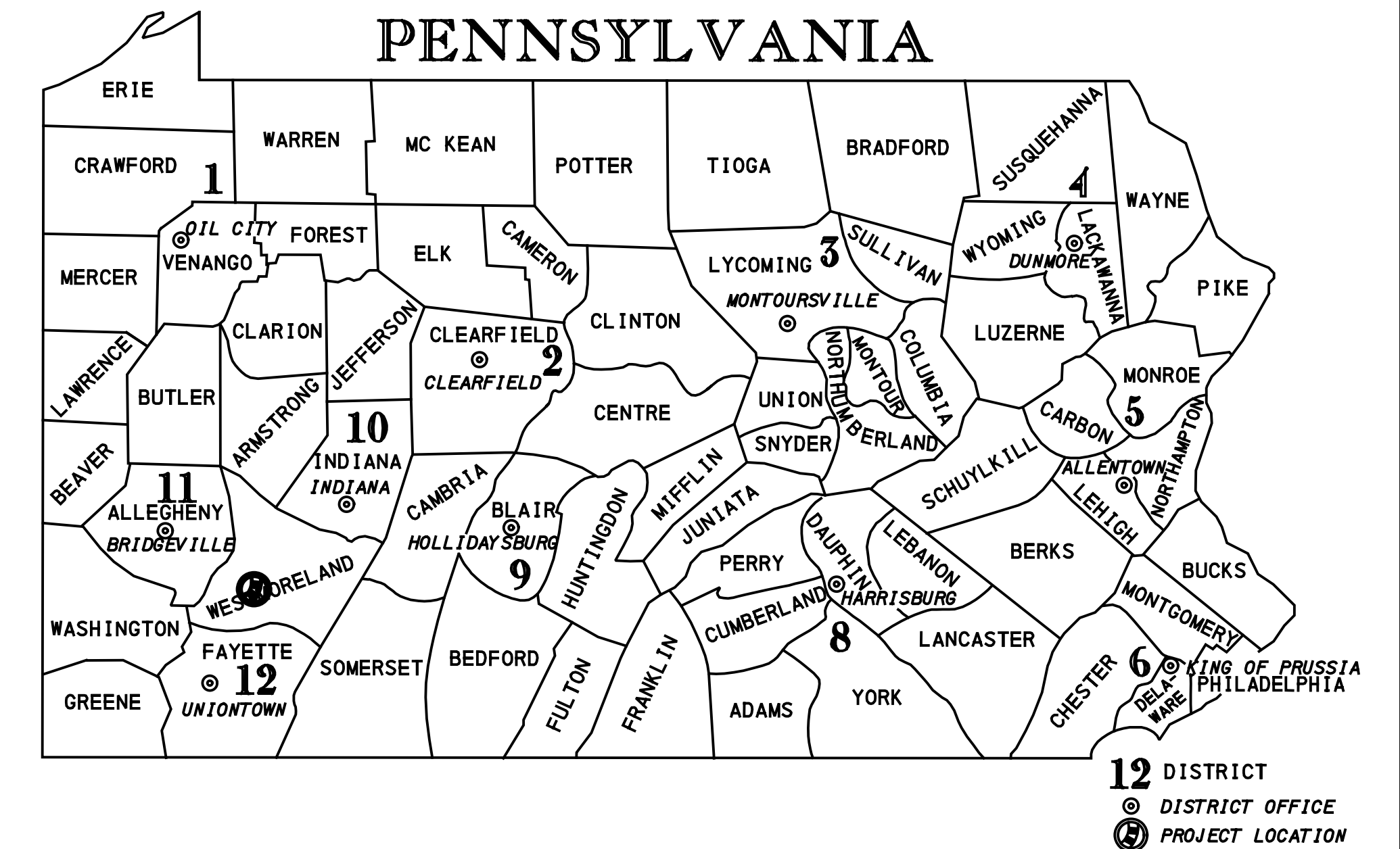
NO EXISTING RECORDS AVAILABLE

LIST OF SEGMENT EQUALITIES

NONE

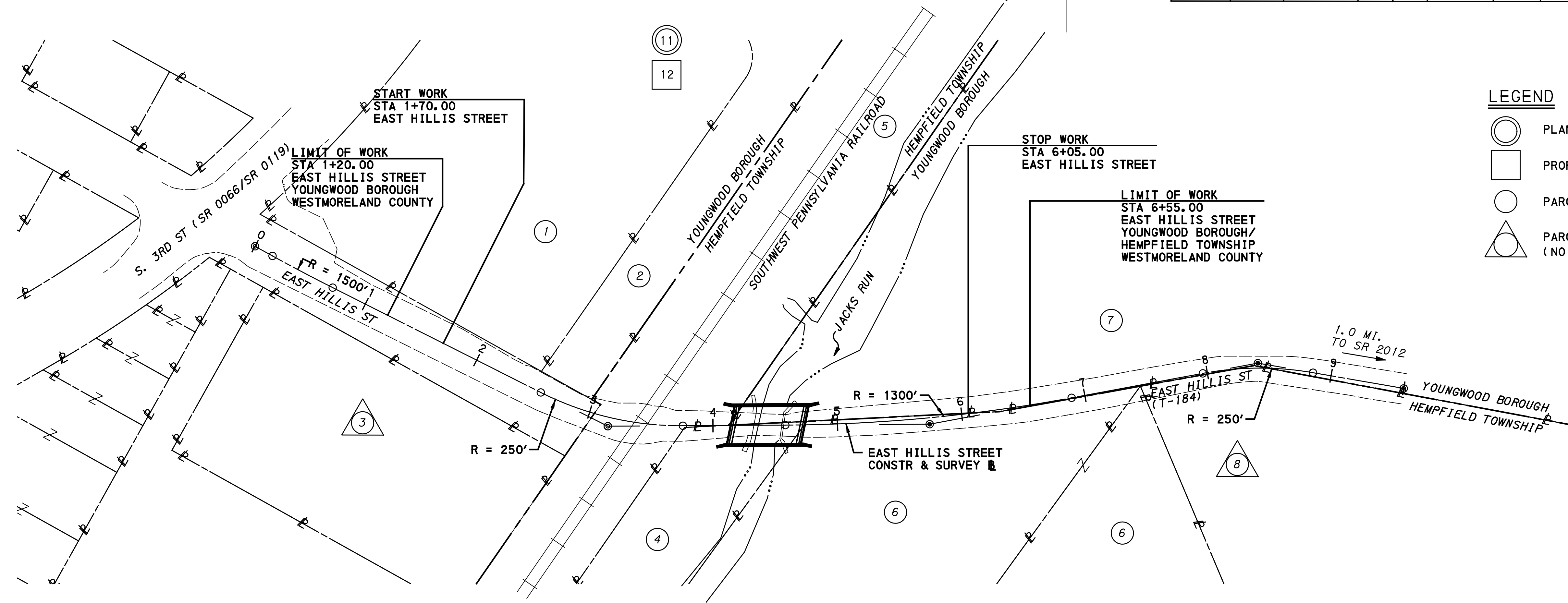
SHEET INDEX	
DESCRIPTION	SHEET
TITLE SHEET	1
INDEX MAP	2
LOCATION MAP & GENERAL NOTES	3
TYPICAL SECTIONS	4
DETAIL SHEETS	5
SUMMARY SHEET	6
TABULATION SHEETS	7-10
PLAN AND PROFILE SHEETS	11 & 12
SUPPLEMENTAL PLANS	
TRAFFIC CONTROL PLANS	1 TO 3
SIGNING & PAVEMENT MARKING PLAN	1 TO 2
EROSION AND SEDIMENT POLLUTION CONTROL PLAN	1 TO 7
STRUCTURE PLAN (L-45)	1 TO 41
CROSS SECTIONS	1 TO 8

DISTRICT	COUNTY	ROUTE	SECTION	SHEET
12-0	WESTMORELAND	T-184	EHS	2 OF 12
YOUNGWOOD BOROUGH/HEMPFIELD TOWNSHIP				
REVISION NUMBER	REVISIONS		DATE	BY



LEGEND

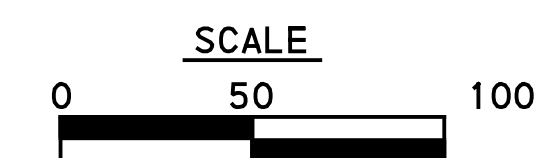
- PLAN SHEET NO.
- PROFILE SHEET NO.
- PARCEL IDENTIFICATION NUMBER
- PARCEL IDENTIFICATION NUMBER (NO TAKE)



LIST OF PROPERTY OWNERS

- | | | |
|------------------------------------|--|--|
| BRUCETON FARM SERVICE, INC. | E. C. HILLIS | DME COMPANY LLC, A DELAWARE LIMITED LIABILITY COMPANY |
| TEDA J. FAMILY LIMITED PARTNERSHIP | WESTMORELAND COUNTY INDUSTRIAL REDEVELOPMENT CORPORATION | A&C PROPERTY HOLDINGS, LLC, A PENNSYLVANIA LIMITED LIABILITY COMPANY |
| STELLA MORGAN, MARRIED | WEST PENN POWER COMPANY | |

INDEX MAP



DRAWN BY: J. M. ...
 CHECKED BY: ...
 DATE PLOTTED: 9/27/2005 ...
 USER: J. M. ...

TABULATION OF OVERALL LENGTH

STA 1+20.00 TO STA 6+55.00 = 535.00 FT. = 0.101 MI.

TABULATION OF CONSTRUCTION LENGTH

STA 1+70.00 TO STA 6+05.00 = 435.00 FT. = 0.082 MI.

EQUALITIES

NONE

SUMMARY OF PROJECT COORDINATES

BASED ON PENNSYLVANIA STATE PLANE SOUTH ZONE COORDINATE SYSTEM

RTE.	STATION	POINT	COORDINATES		BEARING
			NORTH	EAST	
EAST HILLIS ST CONSTR. & SURVEY	0+00.00	POB	332932.4760	1456772.2740	S61° 10' 12"E
	0+16.02	PC	332924.7506	1456786.3091	
	0+43.31	PI	332911.5907	1456810.2174	
	0+70.60	PT	332899.3091	1456834.5886	S63° 15' 17"E
	2+57.63	PC	332815.1389	1457001.6137	
	3+17.89	PI	332788.0206	1457055.4264	
	3+75.89	PT	332788.3979	1457115.6847	N89° 38' 29"E
	4+58.10	PC	332788.9125	1457197.8935	
	5+73.98	PI	332789.6378	1457313.7675	
	6+89.25	PT	332810.8459	1457427.6864	N79° 27' 15"E
	7+96.36	PC	332830.4503	1457532.9913	
	8+41.30	PI	332838.6751	1457577.1706	
	8+85.29	PT	332830.9993	1457621.4486	N80° 09' 55"E
	9+59.20	POE	332818.3750	1457694.2730	

FOUR (4) PLACE COORDINATES ARE FOR COMPUTATIONAL PURPOSES ONLY AND DO NOT IMPLY A PRECISION BEYOND TWO (2) DECIMAL PLACES.

LIST OF PUBLIC UTILITIES

PENNSYLVANIA ONE-CALL SYSTEM (PHONE 1-800-242-1776)
SERIAL NO. 20192811658 (YOUNGWOOD) AND 20192811659 (HEMPFIELD)

E
WEST PENN POWER
143 WEST PENN DRIVE
JEANNETTE, PA 15601
CONTACT PERSON: DAVE EVANS
PHONE: (724) 523-7237

CATV
COMCAST
1530 CHARTIERS AVENUE
PITTSBURGH, PA 15204
CONTACT PERSON: BRIAN WOLLER
PHONE: (724) 691-0614

T
VERIZON
508 OLD FRANKSTOWN ROAD
MONROEVILLE, PA 15146
CONTACT PERSON: JEFF GUIDO
PHONE: (412) 855-1376

W
WESTMORELAND COUNTY MUNICIPAL AUTHORITY - WATER
124 PARK AND POOL ROAD
NEW STANTON, PA 15672
CONTACT PERSON: CURTIS FONTAINE, P.E.
PHONE: (724) 755-5800 EXT. 5950

S
WESTMORELAND COUNTY MUNICIPAL AUTHORITY - SANITARY
124 PARK AND POOL ROAD
NEW STANTON, PA 15672
CONTACT PERSON: BRANDON HASSINGER
PHONE: (724) 834-0966

G
COLUMBIA GAS
1452 GUN CLUB ROAD
UNIONTOWN, PA 15401
CONTACT PERSON: COLE HAINES
PHONE: (724) 970-5337

FO
DQE COMMUNICATIONS
SOUTHSIDE WORKS
424 SOUTH 27TH STREET, SUITE 220
PITTSBURGH, PA 15203
CONTACT: ADAM NULPH
PHONE: (724) 919-7258

DISTRICT	COUNTY	ROUTE	SECTION	SHEET
12-0	WESTMORELAND	T-184	EHS	3 OF 12
YOUNGWOOD BOROUGH/HEMPFIELD TOWNSHIP				
REVISION NUMBER	REVISIONS	DATE	BY	

GENERAL NOTES

THE LEGAL RIGHT-OF-WAY WIDTH OF TOWNSHIP ROAD T-184, EAST HILLIS STREET, FROM STATION 1+70.00 TO STATION 2+40.00 AND FROM STATION 6+05.00 TO STATION 6+55.00 IS 33 FEET, ACCORDING TO ROAD DOCKET 10, PAGE 427, DATED APRIL 25, 1952, AND ACCEPTED, APPROVED, AND CONFIRMED FEBRUARY 14, 1953 IN THE WESTMORELAND COUNTY RECORDERS OFFICE.

THE LEGAL RIGHT-OF-WAY ON EAST HILLIS STREET FROM STATION 2+40.00 TO STATION 6+05.00 IS VARIABLE IN WIDTH, BASED ON THE PLAN OF EAST HILLIS STREET R/W SIGNED ON JANUARY 2, 2019 AND RECORDED ON MAY 7, 2019 IN THE WESTMORELAND COUNTY RECORDER'S OFFICE INSTRUMENT NUMBER 201905070012926.

THE DEPARTMENT RESERVES THE RIGHT TO ELIMINATE ANY OR ALL OF THIS WORK. DO NOT PERFORM WORK EXCEPT THAT WHICH IS WITHIN THE HIGHWAY RIGHT-OF-WAY UNTIL SO ORDERED IN WRITING BY THE ENGINEER.

DO NOT INTERFERE WITH THE OPERATION OF ANY FIRE HYDRANT, FIRE CALL BOX OR POLICE CALL BOX.

THE DEPARTMENT RESERVES THE RIGHT TO ELIMINATE ANY OR ALL OF THE WORK WHICH IS LISTED IN THE TABULATION AS BOROUGH PORTION OR TOWNSHIP PORTION. DO NOT PERFORM ANY SUCH WORK UNTIL SO ORDERED IN WRITING BY THE ENGINEER.

THIS IS A FEDERAL-AID PROJECT AND AS SUCH IS SUBJECT TO INSPECTION BY REPRESENTATIVES OF THE FEDERAL HIGHWAY ADMINISTRATION AND THE PENNSYLVANIA DEPARTMENT OF TRANSPORTATION.

THREE WORKING DAYS PRIOR TO EXCAVATION, THE CONTRACTOR MUST CONTACT THE PA ONE CALL SYSTEM, INC. PHONE 1-800-242-1776. SERIAL NO. YOUNGWOOD BOROUGH/HEMPFIELD TOWNSHIP.

TEMPORARY CONSTRUCTION EASEMENT. AN EASEMENT TO USE THE LAND AS NECESSARY DURING CONSTRUCTION OF THE PROJECT. THE EASEMENT IS REQUIRED ONLY UNTIL THE CONSTRUCTION OR WORK INDICATED BY THE PLAN IS COMPLETED, UNLESS SOONER RELINQUISHED IN WRITING BY THE BOROUGH / TOWNSHIP.

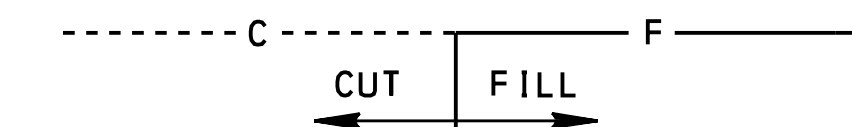
THE HORIZONTAL CONTROL IS BASED ON THE PENNSYLVANIA STATE PLANE COORDINATE SYSTEM (SPCS 83), PA SOUTH ZONE.

THE VERTICAL CONTROL IS BASED UPON NORTH AMERICAN VERTICAL DATUM OF 1988 (NAVD 88).

ALL CURVE DATA IS BASED ON THE ARC DEFINITION UNLESS OTHERWISE INDICATED.

CONSTRUCT PROJECT IN ACCORDANCE WITH PUBLICATION 408 SPECIFICATIONS, DATED 2016.

THE FOLLOWING SYMBOLS SHALL BE USED TO DEPICT SLOPE LIMITS:



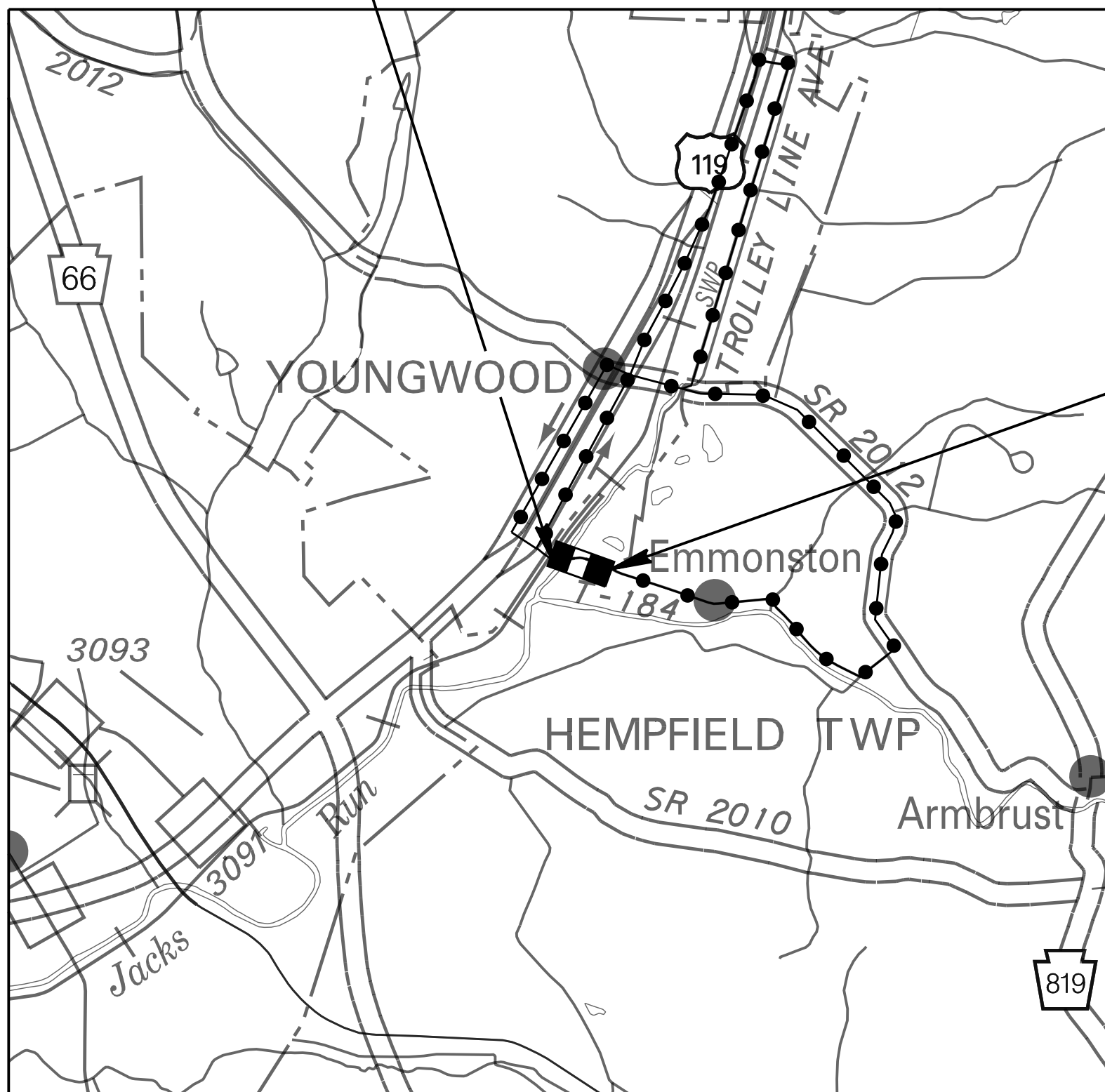
JACKS RUN IS A NON-NAVIGABLE STREAM.

DETAILS, OTHER THAN THOSE INDICATED, ARE ON THE FOLLOWING STANDARD DRAWINGS:

- | | |
|---------------------------------|---------------------------------------|
| RC-10M JUNE 1, 2010 | TC-8600 JUNE 13, 2013 (13 SHEETS) |
| RC-11M JUNE 1, 2010 (2 SHEETS) | TC-8602 JUNE 13, 2013 (4 SHEETS) |
| RC-12M FEB 8, 2019 (2 SHEETS) | TC-8604 JUNE 13, 2013 (4 SHEETS) |
| RC-13M JUNE 1, 2010 | TC-8700C JUNE 13, 2013 (12 SHEETS) |
| RC-23M FEB 8, 2019 (3 SHEETS) | TC-8701S JUNE 13, 2013 (4 SHEETS) |
| RC-25M FEB 8, 2019 (4 SHEETS) | TC-8702B JUNE 13, 2013 (9 SHEETS) |
| RC-28M FEB 8, 2019 (2 SHEETS) | TC-8716 JUNE 13, 2013 |
| RC-30M DEC 17, 2019 (5 SHEETS) | TC-8717 JUNE 13, 2013 |
| RC-50M FEB 8, 2019 (18 SHEETS) | |
| RC-51M DEC 17, 2019 (14 SHEETS) | BC-732M JANUARY 31, 2019 (3 SHEETS) |
| RC-54M DEC 17, 2019 (12 SHEETS) | BC-734M JANUARY 31, 2019 (3 SHEETS) |
| RC-64M JUNE 1, 2010 | BC-735M SEPTEMBER 30, 2016 (1 SHEET) |
| RC-70M FEB 8, 2019 (3 SHEETS) | BC-736M JANUARY 31, 2019 (3 SHEETS) |
| RC-73M FEB 8, 2019 (4 SHEETS) | BC-739M JANUARY 31, 2019 (2 SHEETS) |
| RC-75M JUNE 1, 2010 | BC-751M JANUARY 31, 2019 (7 SHEETS) |
| RC-77M DEC 17, 2019 | BC-752M SEPTEMBER 30, 2016 (2 SHEETS) |
| | BC-755M JANUARY 31, 2019 (4 SHEETS) |
| | BC-757M SEPTEMBER 30, 2016 (3 SHEETS) |
| | BC-766M JANUARY 31, 2019 (2 SHEETS) |
| | BC-775M SEPTEMBER 30, 2016 (3 SHEETS) |
| | BC-788M JANUARY 31, 2019 (12 SHEETS) |

SEEDING:
USE FORMULA D FOR SLOPES FLATTER THAN 3:1
USE FORMULA E FOR TEMPORARY OR AS INDICATED ON PLANS

LIMIT OF WORK
STA 1+20.00
EAST HILLIS STREET
HEMPFIELD TOWNSHIP
WESTMORELAND COUNTY



LIMIT OF WORK
STA 6+55.00
EAST HILLIS STREET
YOUNGWOOD BOROUGH/
HEMPFIELD TOWNSHIP
WESTMORELAND COUNTY

LOCATION MAP

EARTHWORK SUMMARY ENTIRE PROJECT

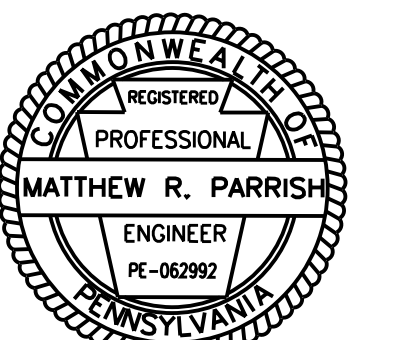
THE INFORMATION ON ESTIMATED AMOUNTS OF EARTHWORK HAS BEEN USED IN THE PRELIMINARY ESTIMATE. DO NOT USE AS A WAIVER OF ANY PROVISIONS OF THE SPECIFICATIONS AND CONTRACTS.

CU. YDS. OF EXCAVATION			CUBIC YDS. OF NO. 1 COARSE AGGREGATE	CUBIC YDS. OF NO. 2A COARSE AGGREGATE	CUBIC YDS. OF NO. 57 COARSE AGGREGATE**	CUBIC YDS. OF COMPLETED EMBANKMENT *	CUBIC YDS. OF STRUCTURAL BACKFILL **	CY OF SELECT BORROW EXCAVATION ROCK **		CUBIC YDS. OF WASTE
CLASS 1	CLASS 3**	CLASS 4						CLASS R-4	CLASS R-8	
399	502	5	454	4	51	1201	114	76	502	986

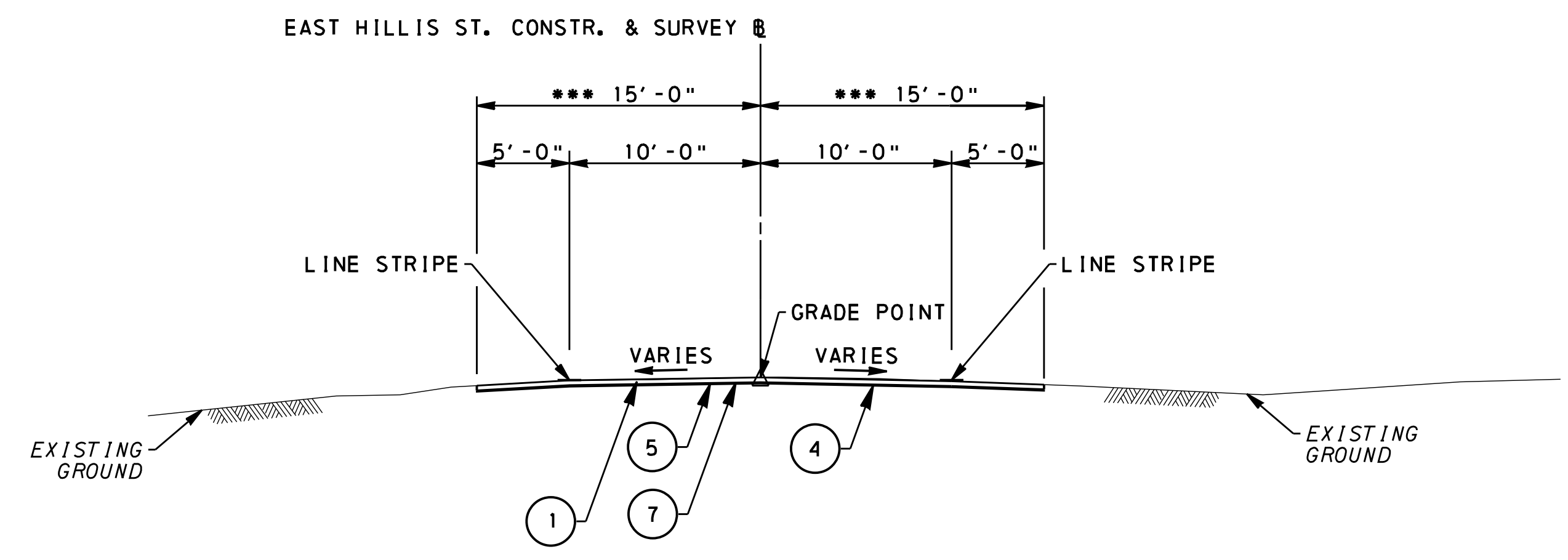
* INCLUDES ALL BORROW ITEMS
** PART OF LUMP SUM STRUCTURE ITEM



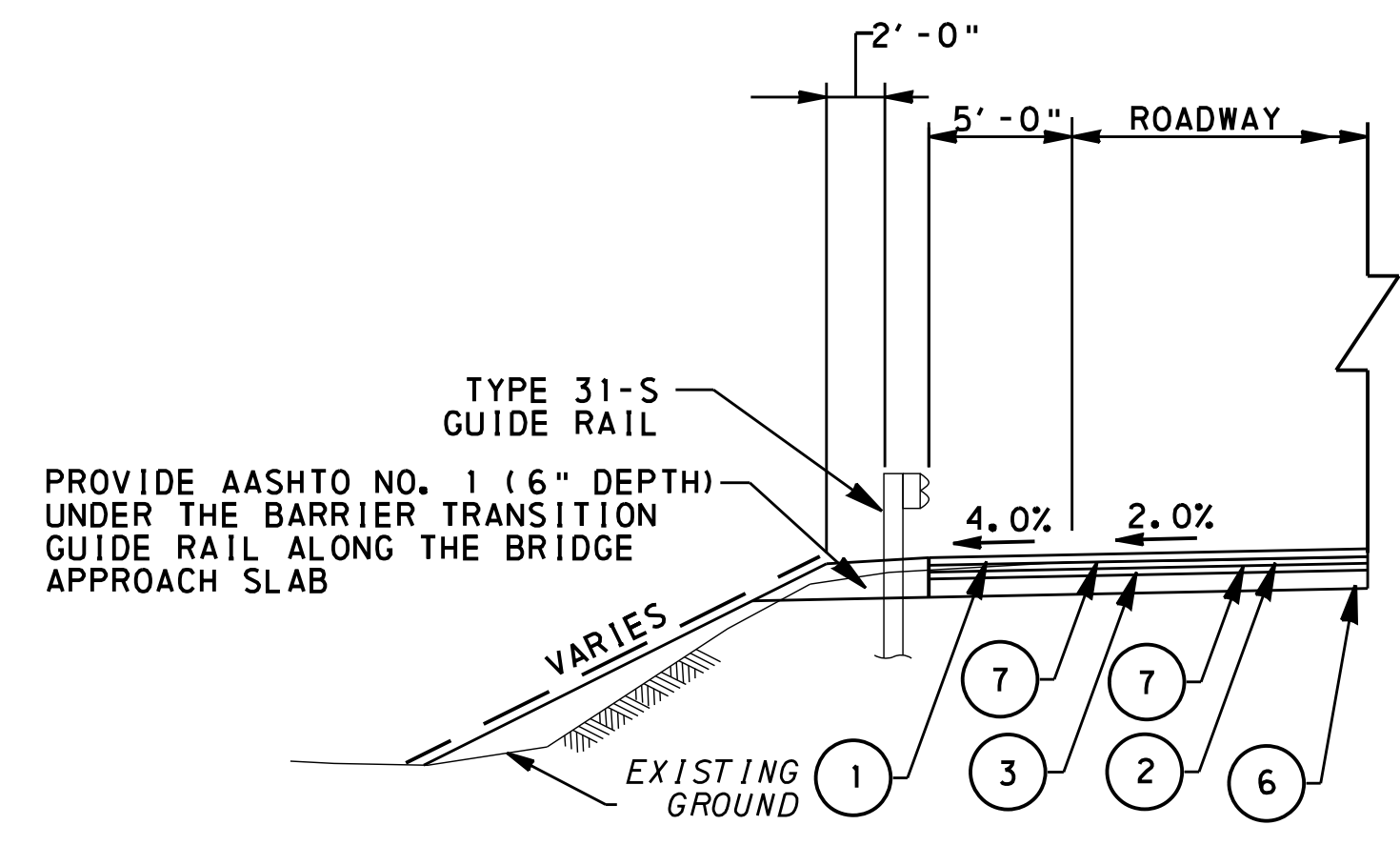
- LEGEND**
- ▬ PROJECT
 - DETOUR ROUTE
 - ▬ STATE HIGHWAY
 - ▬ CITY STREET
 - - - MUNICIPAL BOUNDARY



DISTRICT	COUNTY	ROUTE	SECTION	SHEET
12-0	WESTMORELAND	T-184	EHS	4 OF 12
YOUNGWOOD BOROUGH/HEMPFIELD TOWNSHIP				
REVISION NUMBER	REVISIONS			DATE BY

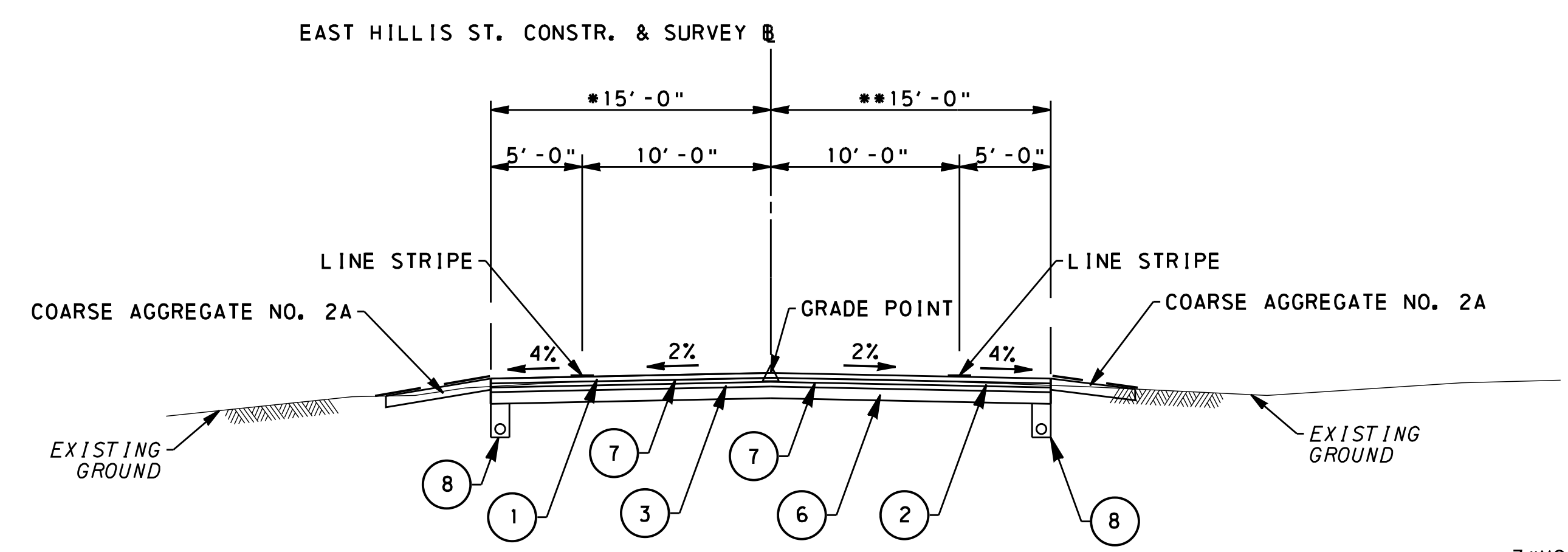


EAST HILLIS STREET TYPICAL SECTION (MILL AND OVERLAY)
 STA 2+37.00 TO STA 3+25.00
 STA 5+60.00 LT TO STA 6+05.00
 *** STA 2+37.00 TO STA 2+85.43 LT & RT, VARIES 14.0' TO 15.0'
 NOT TO SCALE

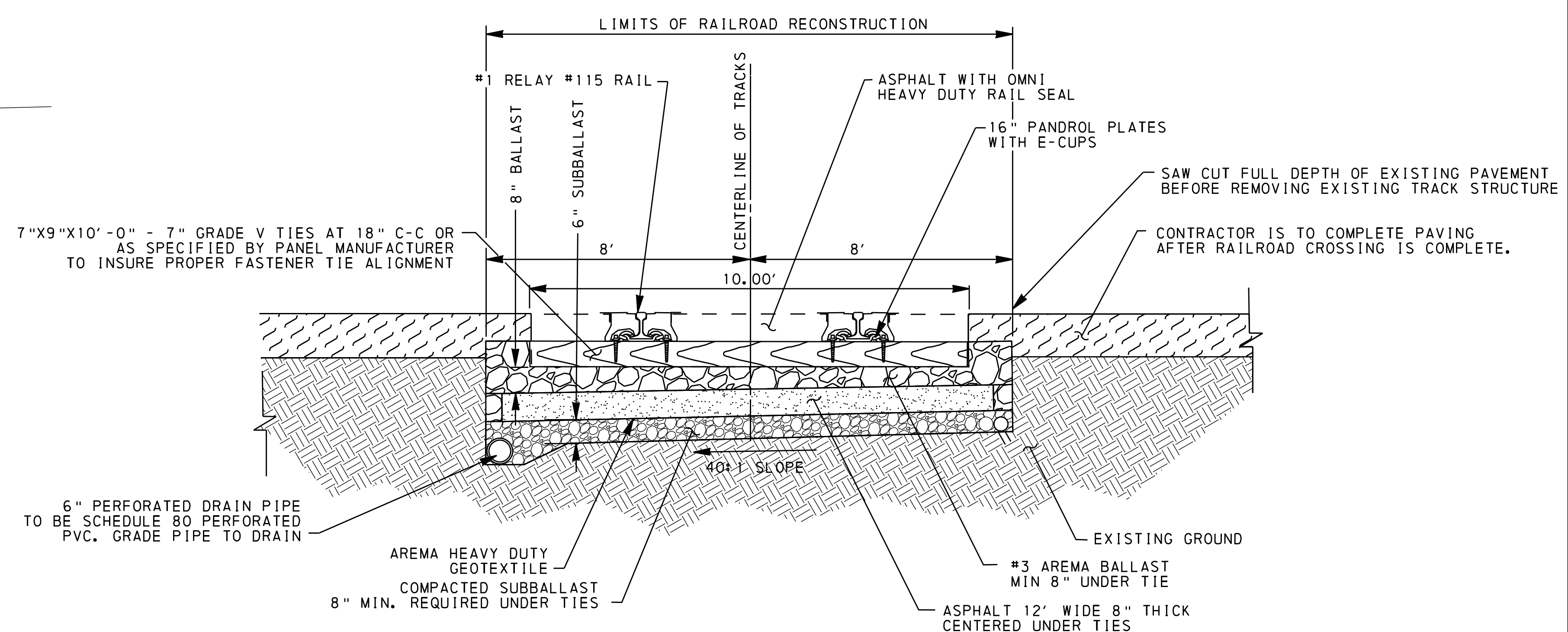


EAST HILLIS ST. - PARTIAL SECTION
 STA 3+73.22 RT TO STA 4+03.26 RT (OPPOSITE HAND)
 STA 3+92.00 LT TO STA 4+09.26 LT
 STA 4+78.29 RT TO STA 5+42.73 RT (OPPOSITE HAND)
 STA 4+84.94 LT TO STA 5+21.44 LT
 NOT TO SCALE

- LEGEND**
- ① SUPERPAVE ASPHALT MIXTURE DESIGN, WMA WEARING COURSE, PG 64-22, 0.3 TO < 3.0 MILLION ESALS, 9.5 MM MIX, 1-1/2" DEPTH, SRL-G
 - ② SUPERPAVE ASPHALT MIXTURE DESIGN, WMA BINDER COURSE, PG 64-22, 0.3 TO < 3.0 MILLION ESALS, 19.0 MM MIX, 2 1/2" DEPTH
 - ③ SUPERPAVE ASPHALT MIXTURE DESIGN, WMA BASE COURSE, PG 64-22, 0.3 TO < 3.0 MILLION ESALS, 25.0 MM MIX, 4 1/2" DEPTH
 - ④ SUPERPAVE ASPHALT MIXTURE DESIGN, WMA WEARING COURSE (LEVELING), PG 64-22, 0.3 TO < 3.0 MILLION ESALS, 9.5 MM MIX, SRL-L
 - ⑤ MILLING OF BITUMINOUS PAVEMENT SURFACE, 2" DEPTH, MILLED MATERIAL RETAINED BY CONTRACTOR
 - ⑥ SUBBASE 6" DEPTH (NO. 2A)
 - ⑦ BITUMINOUS TACK COAT (NTT/CNTT)
 - ⑧ 6" PAVEMENT BASE DRAIN
- — — SEEDING AND SOIL SUPPLEMENTS, FORMULA L, INCLUDING MULCHING - WOOD FIBER

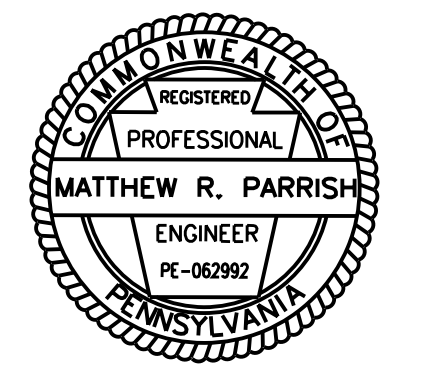


EAST HILLIS STREET TYPICAL SECTION (FULL DEPTH RECONSTRUCTION)
 STA 3+25.00 TO STA 3+34.07
 STA 3+45.27 TO STA 3+98.47
 STA 4+89.53 TO STA 5+60.00
 *STA 5+10.00 TO STA 5+60.00 LT TRANSITION 15.0' TO 13.0'
 **STA 5+10.00 TO STA 5+60.00 RT TRANSITION 15.0' TO 11.5'
 NOT TO SCALE



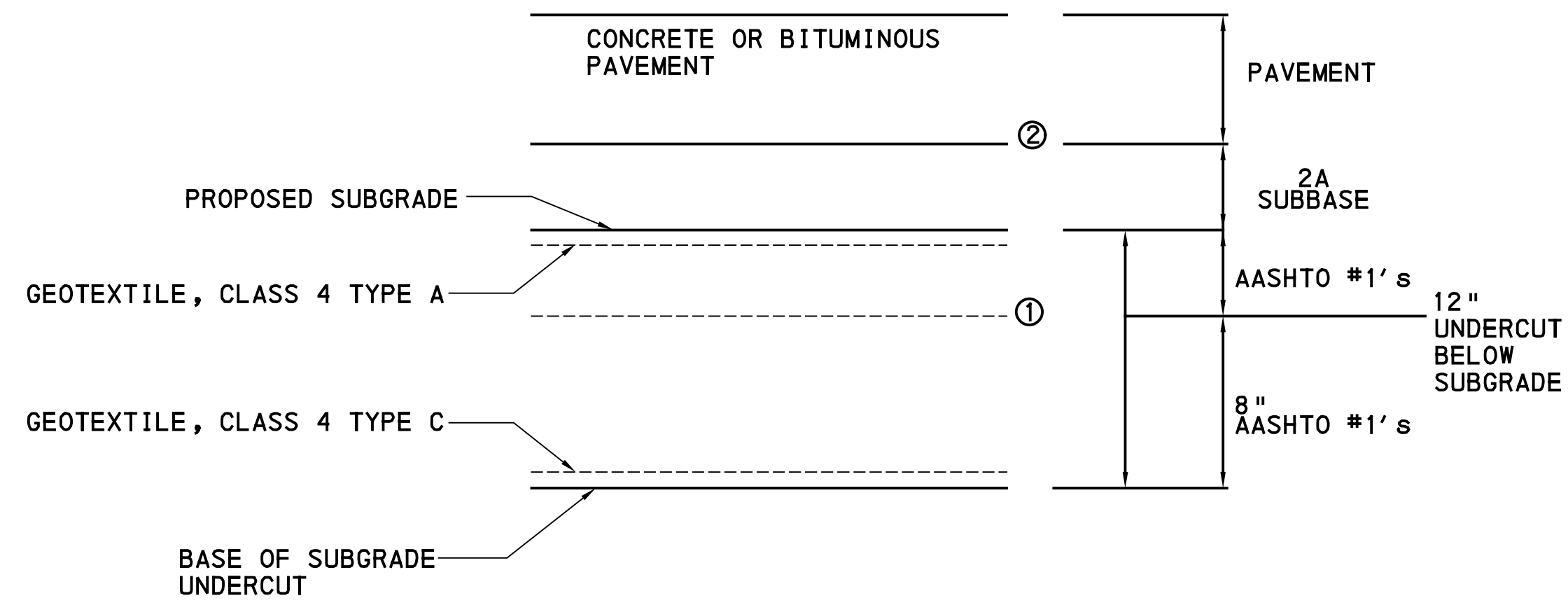
EAST HILLIS STREET RAILROAD CROSSING TYPICAL SECTION
 (TO BE COMPLETED BY OTHERS)
 STA 3+34.07 TO STA 3+45.27
 NOT TO SCALE

DRAWN BY: J. W. ...
 CHECKED BY: ...
 DATE PLOTTED: 07/27/09
 USER: J. W. ...



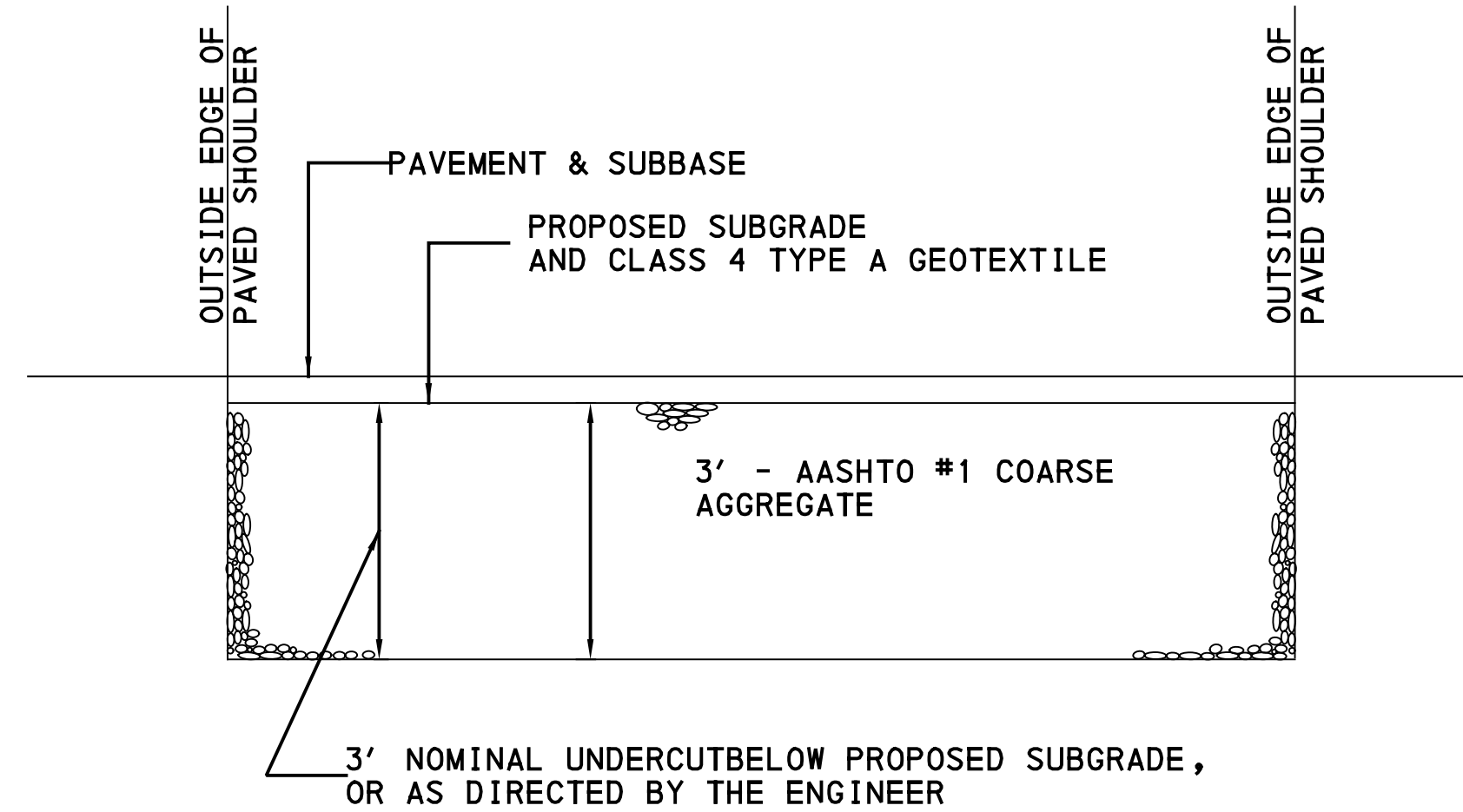
TYPICAL SECTION

DISTRICT	COUNTY	ROUTE	SECTION	SHEET
12-0	WESTMORELAND	T-184	EHS	5 OF 12
YOUNGWOOD BOROUGH/HEMPFIELD TOWNSHIP				
REVISION NUMBER	REVISIONS			DATE BY



TYPE 1 SUBGRADE UNDERCUT DETAIL
COMPACTION AT POINTS ① ②

1. A MINIMUM OF 8" OF AASHTO NO. 1 COARSE AGGRAGATE MUST BE IN PLACE OVER THE GEOTEXTILE BEFORE EQUIPMENT BE PERMITTED TO PASS OVER IT.
2. A MINIMUM OF 6" OF 2A SUBBASE MUST BE PLACED OVER THE GEOTEXTILE BEFORE EQUIPMENT BE PERMITTED TO PASS OVER IT.
3. REFERENCE POINT FOR UNDERCUTTING IS SUBGRADE ELEVATION. APPLY UNDERCUTTING TREATMENT AT LOCATIONS DIRECTED BY THE ENGINEER. PLACE TYPE A AND TYPE C CLASS 4 GEOTEXTILE ACCORDINGLY OR AS DIRECTED BY THE ENGINEER.
4. UNDERDRAIN AND OUTLET PIPE TO BE INSTALLED AS DIRECTED BY THE ENGINEER.



TYPE 2 SUBGRADE UNDERCUT DETAIL
NOT TO SCALE

1. ALL EXCAVATION PAID FOR AS CLASS 1 EXCAVATION.
2. CLASS 4 TYPE A GEOTEXTILE WILL BE USED FOR SEPARATION PURPOSES, BETWEEN THE SUBBASE MATERIAL AND THE AASHTO #1 COARSE AGGREGATE.
3. AT LEAST 8 INCHES OF SUBBASE MATERIAL SHOULD BE IN PLACE ON GEOTEXTILE BEFORE PERMITTING COMPACTION EQUIPMENT PASS OVER IT.
4. UNDERDRAIN AND OUTLET PIPE TO BE INSTALLED AS DIRECTED BY THE ENGINEER.
5. APPLY UNDERCUTTING AT LOCATIONS SHOWN OR AS DIRECTED BY THE ENGINEER

DRAWN BY: J. W. ...
 FILE NAME: ...
 APPROVAL: ...
 DATE PLOTTED: 9/27/2018 10:58:52 AM
 USER: J. W. ...



SUMMARY

REVISION NO	REVISIONS	DATE	BY	DISTRICT	COUNTY	ROUTE	SECTION	SHEET
				12	WESTMORELAND	0000	EHS	6 OF 12

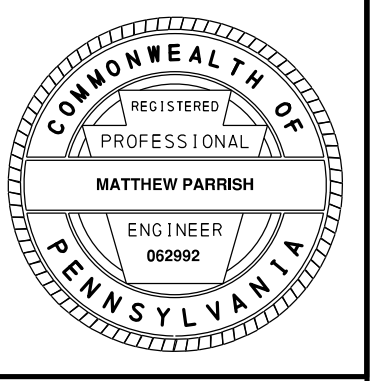
◆ - SEE SPECIAL PROVISIONS

QUANTITY	ITEM NO	DESCRIPTION	DESIGN NO	FOR TAB SEE SHEET	QUANTITY	ITEM NO	DESCRIPTION	DESIGN NO	FOR TAB SEE SHEET	QUANTITY	ITEM NO	DESCRIPTION	DESIGN NO	FOR TAB SEE SHEET	QUANTITY	ITEM NO	DESCRIPTION	DESIGN NO	FOR TAB SEE SHEET	
	UNIT					UNIT					UNIT					UNIT				
	0201 0001 LS	CLEARING AND GRUBBING		NO TAB	3	0615 0066 EACH	66" RED SUBSURFACE DRAIN OUTLET MARKER		7-8	3	0901 0451 EACH	3-LINE CHANGEABLE MESSAGE SIGN WITHOUT TELECOMMUNICATIONS		TCP	5000	9000 0004 DOLLA	REPAIR OF ACCESS ROADS		NO TAB	
399	0203 0001 CY	CLASS 1 EXCAVATION		7-8	4	0620 0010 EACH	TYPICAL AND ALTERNATE CONCRETE BRIDGE BARRIER TRANSITION WITHOUT INLET PLACEMENT		9-10	39	0931 0003 SF	POST MOUNTED SIGNS, TYPE B, STEEL SQUARE POST		S & PMP	2	9000 0010 EACH	GRADE ADJUSTMENT OF MUNICIPALITY'S EXISTING MANHOLES, ADJUSTMENT ONLY		9-10	
5	0204 0150 CY	CLASS 4 EXCAVATION		7-8	3	0620 0400 EACH	TERMINAL SECTION, SINGLE		9-10	9	0937 0107 EACH	GUIDE RAIL MOUNTED DELINEATOR TYPE B, (W/W)		S & PMP	65000	9000 0020 DOLLA	OFF-SITE DISPOSAL OF HISTORIC FILL		NO TAB	
219	0205 0281 CY	SELECTED BORROW EXCAVATION, COARSE AGGREGATE, NO. 1		7-8	38	0620 1600 LF	TYPE 31-S GUIDE RAIL		9-10	6	0937 0114 EACH	GUIDE RAIL MOUNTED DELINEATOR TYPE D, (W/W)		S & PMP		9000 0025 LS	HEALTH AND SAFETY PLAN		NO TAB	
1	0205 0390 TON	SELECTED BORROW EXCAVATION, COARSE AGGREGATE, NO. 2A		9-10	100	0620 1625 LF	TYPE 31-SC GUIDE RAIL		9-10	2	0937 0195 EACH	BARRIER MOUNTED DELINEATOR, SIDE MOUNT TYPE R, (W/W)		S & PMP						
244	0212 0001 LF	GEOTEXTILE, CLASS 1		7-8	1	0620 1670 EACH	TYPE 31-STRONG POST IN-LINE ANCHOR		9-10	2	0937 0196 EACH	BARRIER MOUNTED DELINEATOR, TOP MOUNT TYPE R, (W/W)		S & PMP						
434	0212 0014 SY	GEOTEXTILE, CLASS 4, TYPE A		7-8	30	0630 0010 LF	PLAIN CEMENT CONCRETE CURB, INCLUDING REMOVAL OF EXISTING CURB		7-8	1	0960 0126 EACH	WHITE HOT THERMOPLASTIC LEGEND, "RR CROSSING", 6' - 6", 11' LANE WIDTH (INCLUDES "X", "RR", AND 2 TRANSVERSE BANDS)		S & PMP						
339	0212 0016 SY	GEOTEXTILE, CLASS 4, TYPE C		7-8		0686 0020 LS	CONSTRUCTION SURVEYING, TYPE B		NO TAB	1220	0962 1005 LF	4" YELLOW WATERBORNE PAVEMENT MARKINGS		S & PMP						
1000	0213 0002 DOLLA	TEMPORARY PROJECT AIR POLLUTION CONTROL		NO TAB		0686 0050 LS	CONSTRUCTION SURVEYING, TYPE D		NO TAB	22	0964 0021 LF	24" WHITE EPOXY PAVEMENT MARKINGS		S & PMP						
452	0311 0423 SY	SUPERPAVE ASPHALT MIXTURE DESIGN, WMA BASE COURSE, PG 64-22, 0.3 TO < 3 MILLION ESALS, 25.0 MM MIX, 4 1/2" DEPTH		7-8		0688 0002 LS	MICROCOMPUTER WITH BATTERY BACKUP SYSTEM, TYPE A		NO TAB	1	0964 0151 EACH	WHITE EPOXY LEGEND, "RR CROSSING", 6' - 6", 11' LANE WIDTH (INCLUDES "X", "RR", AND 2 TRANSVERSE BANDS)		S & PMP						
452	0350 0106 SY	SUBBASE 6" DEPTH (NO. 2A)		7-8		0689 0003 LS	CPM SCHEDULE		NO TAB	11	0971 0001 EACH	REMOVE POST MOUNTED SIGNS, TYPE B		S & PMP						
1105	0411 0483 SY	SUPERPAVE ASPHALT MIXTURE DESIGN, WMA WEARING COURSE, PG 64-22, 0.3 TO < 3 MILLION ESALS, 9.5 MM MIX, 1 1/2" DEPTH, SRL-G		7-8	12	0802 0001 CY	TOPSOIL FURNISHED AND PLACED		9-10	10	0975 0001 EACH	REMOVE POST MOUNTED SIGNS, TYPE F		S & PMP						
18	0411 1495 TON	SUPERPAVE ASPHALT MIXTURE DESIGN, WMA WEARING COURSE (LEVELING), PG 64-22, 0.3 TO < 3 MILLION ESALS, 9.5 MM MIX, SRL-L		7-8	67	0803 0001 CY	PLACING STOCKPILED TOPSOIL		9-10		1018 0001 LS	REMOVAL OF EXISTING BRIDGE		STR						
452	0411 6450 SY	SUPERPAVE ASPHALT MIXTURE DESIGN, WMA BINDER COURSE, PG 64-22, 0.3 TO < 3 MILLION ESALS, 19.0 MM MIX, 2 1/2" DEPTH		7-8	35	0804 0003 LB	SEEDING AND SOIL SUPPLEMENTS - FORMULA D, INCLUDING MULCH		9-10	EITHER	8010 0001 LS	BRIDGE STRUCTURE, AS DESIGNED, L-45		1	STR					
2270	0460 0003 SY	BITUMINOUS TACK COAT (NTT/CNTT)		7-8	11	0804 0004 LB	SEEDING - FORMULA E, INCLUDING MULCH		9-10	AND 41526	1002 0053 LB	REINFORCEMENT BARS, EPOXY COATED		1	STR					
80	0461 0001 SY	BITUMINOUS PRIME COAT		9-10	5000	0845 0001 DOLLA	UNFORESEEN WATER POLLUTION CONTROL		NO TAB	AND	1005 0500 LS	STEEL BEAM TEST PILES, HP12X74		1	STR					
656	0491 0013 SY	MILLING OF BITUMINOUS PAVEMENT SURFACE, 2" DEPTH, MILLED MATERIAL RETAINED BY CONTRACTOR		7-8	2	0849 0010 EACH	ROCK CONSTRUCTION ENTRANCE		9-10	AND 279	1005 1104 LF	STEEL BEAM BEARING PILES, HP12X74		1	STR					
	0608 0001 LS	MOBILIZATION		NO TAB	2	4855 0003 EACH	PUMPED WATER FILTER BAG, PUMP, AND HOSES		9-10	AND 12	1005 1211 EACH	STEEL BEAM (NORMAL DUTY) PILE TIP REINFORCEMENT, HP 12X74		1	STR					
	0609 0004 LS	INSPECTOR'S FIELD OFFICE AND INSPECTION FACILITIES, TYPE C		NO TAB	2	0855 0004 EACH	REPLACEMENT PUMPED WATER FILTER BAG		9-10	AND 436	1019 0050 SY	PROTECTIVE COATING FOR REINFORCED CONCRETE SURFACES (PENETRATING SEALER, BRIDGE SUPERSTRUCTURE)		1	STR					
	0609 0009 LS	EQUIPMENT PACKAGE		NO TAB	172	0867 0018 LF	COMPOST FILTER SOCK, 18" DIAMETER		9-10	AND 280	9000 0500 LF	MANDATORY PRE-DRILLING FOR DRIVEN PILES		1	STR					
244	0610 7002 LF	6" PAVEMENT BASE DRAIN		7-8	55	0867 0032 LF	COMPOST FILTER SOCK, 32" DIAMETER		9-10	OR	8020 0001 LS	PRESTRESSED CONCRETE BRIDGE STRUCTURE		1	STR					
4	0610 7400 CY	ADDITIONAL COARSE AGGREGATE FOR EXTRA DEPTH PAVEMENT BASE DRAIN		7-8		0901 0001 LS	MAINTENANCE AND PROTECTION OF TRAFFIC DURING CONSTRUCTION		NO TAB	OR	8030 0001 LS	STEEL BRIDGE STRUCTURE		1	STR					
19	0615 0022 LF	6" SUBSURFACE DRAIN OUTLETS		7-8	20	0901 0231 DAY	ADDITIONAL WARNING LIGHTS, TYPE B		TCP		9000 0001 LS	REMOVE, STORE, AND RESET EXISTING BOLLARDS AND GATE		7-8						
3	0615 0040 EACH	SUBSURFACE DRAIN OUTLET ENDWALL		7-8	200	0901 0240 SF	ADDITIONAL TRAFFIC CONTROL SIGNS		TCP	2	9000 0002 EACH	TEMPORARY COFFERDAM		9-10						



TABULATION OF QUANTITIES ROADWAY

REVISION NO	REVISIONS	DATE	BY	DISTRICT	COUNTY	ROUTE	SECTION	SHEET
				12	WESTMORELAND	0000	EHS	7 OF 12

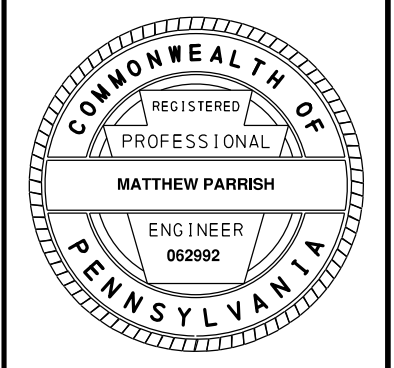


CLASS 1 EXCAVATION	CLASS 4 EXCAVATION	SELECTED BORROW EXCAVATION, COARSE AGGREGATE, NO. 1	GEOTEXTILE, CLASS 1	GEOTEXTILE, CLASS 4, TYPE A	GEOTEXTILE, CLASS 4, TYPE C	SUPERPAVE ASPHALT MIXTURE DESIGN, WMA BASE COURSE, PG 64-22, 0.3 TO < 3 MILLION ESALS, 25.0 MM MIX, 4 1/2" DEPTH	SUBBASE 6" DEPTH (NO. 2A)	SUPERPAVE ASPHALT MIXTURE DESIGN, WMA WEARING COURSE, PG 64-22, 0.3 TO < 3 MILLION ESALS, 9.5 MM MIX, 1 1/2" DEPTH, SRL-G	SUPERPAVE ASPHALT MIXTURE DESIGN, WMA WEARING COURSE (LEVELING), PG 64-22, 0.3 TO < 3 MILLION ESALS, 9.5 MM MIX, SRL-L	SUPERPAVE ASPHALT MIXTURE DESIGN, WMA BINDER COURSE, PG 64-22, 0.3 TO < 3 MILLION ESALS, 19.0 MM MIX, 2 1/2" DEPTH	BITUMINOUS TACK COAT (NTT/CNTT)	MILLING OF BITUMINOUS PAVEMENT SURFACE, 2" DEPTH, MILLED MATERIAL RETAINED BY CONTRACTOR	6" PAVEMENT BASE DRAIN	ADDITIONAL COARSE AGGREGATE FOR EXTRA DEPTH PAVEMENT BASE DRAIN	6" SUBSURFACE DRAIN OUTLETS	SUBSURFACE DRAIN OUTLET ENDWALL	66" RED SUBSURFACE DRAIN OUTLET MARKER	PLAIN CEMENT CONCRETE CURB, INCLUDING REMOVAL OF EXISTING CURB	REMOVE, STORE, AND RESET EXISTING BOLLARDS AND GATE	REMARKS	SIDE	STATIONS	
0203 0001 CY	0204 0150 CY	0205 0281 CY	0212 0001 LF	0212 0014 SY	0212 0016 SY	0311 0423 SY	0350 0106 SY	0411 0483 SY	0411 1495 TON	0411 6450 SY	0460 0003 SY	0491 0013 SY	0610 7002 LF	0610 7400 CY	0615 0022 LF	0615 0040 EACH	0615 0066 EACH	0630 0010 LF	9000 0001 LS	ITEM NUMBER	UNIT		
																						T-184 SECTION EHS	
						292	7.4			585	271											MILL AND OVERLAY	LT / RT 2+37.00 to 3+25.00
						43	1			86	37											DRIVEWAY ADJUSTMENT	LT 2+42.97 to 2+92.19
9						28	28			28	56											FULL DEPTH SHOULDER RECONSTRUCTION	LT 2+75.50 to 3+25.00
																		30				FULL DEPTH RECONSTRUCTION	LT 2+81.12 to 3+08.21
6						30	30	30		30	61											FULL DEPTH RECONSTRUCTION	LT / RT 3+25.00 to 3+34.07
94		94		201	161																	TYPE 1 & 2 SUBGRADE UNDERCUT AS DIRECTED	LT / RT 3+25.00 to 3+98.47
			67										67										RT 3+40.00 to 4+03.50
120						171	171	171		171	342											FULL DEPTH RECONSTRUCTION	LT / RT 3+45.27 to 3+98.47
			50										50										LT 3+55.00 to 4+08.00
																						X	LT 3+63.34 to 3+96.29
		6																					RT 3+93.00 to 4+03.25
															7								RT 4+00.00 to 4+03.50
															10								LT 4+00.00 to 4+08.00
																							LT 4+00.00 to 4+09.25
																1	1						RT 4+03.50 to 4+03.50
																1	1						LT 4+08.00
																							RT 4+76.50 to 4+85.00
																							LT 4+85.00 to 4+92.25
65						223	223	223		223	446											FULL DEPTH RECONSTRUCTION	LT / RT 4+89.53 to 5+60.00
105		105		233	178																	TYPE 1 & 2 SUBGRADE UNDERCUT AS DIRECTED	LT / RT 4+89.53 to 5+60.00
		1											0.2										LT 4+98.00 to 5+00.00
								224	6.2		449	225										DRIVEWAY ADJUSTMENT	LT 4+98.21 to 6+05.00
																1	1						LT 4+99.50 to 4+99.50
															2								LT 4+99.50 to 5+00.00
		2.5											2.3										LT 5+00.00 to 5+25.00
						62							62										LT 5+00.00 to 5+60.00
		1											30	0.9									LT / RT 5+25.00

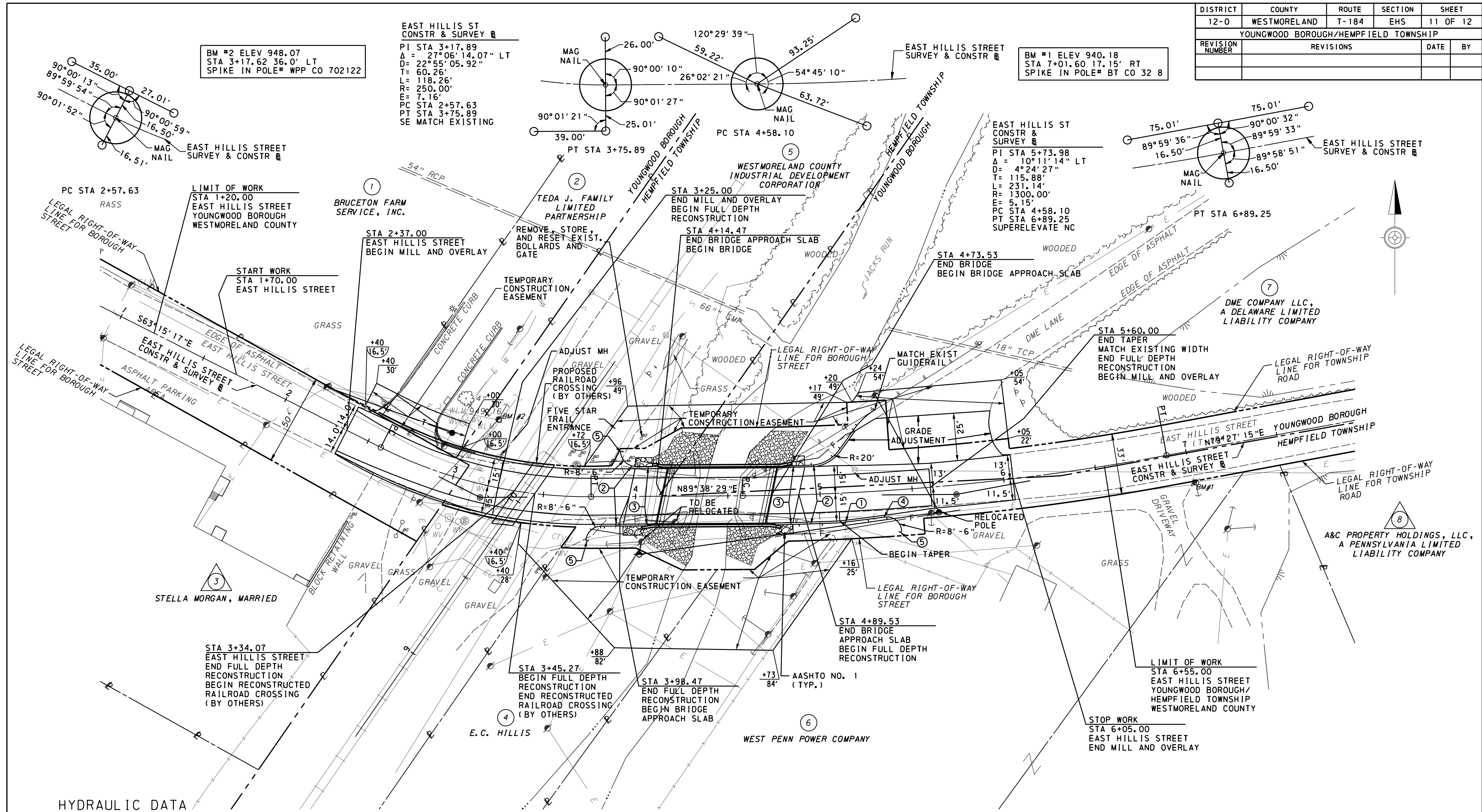
TABULATION OF QUANTITIES ROADWAY

REVISION NO	REVISIONS	DATE	BY	DISTRICT	COUNTY	ROUTE	SECTION	SHEET
				12	WESTMORELAND	0000	EHS	8 OF 12

CLASS 1 EXCAVATION	CLASS 4 EXCAVATION	SELECTED BORROW EXCAVATION, COARSE AGGREGATE, NO. 1	GEOTEXTILE, CLASS 1	GEOTEXTILE, CLASS 4, TYPE A	GEOTEXTILE, CLASS 4, TYPE C	SUPERPAVE ASPHALT MIXTURE DESIGN, WMA BASE COURSE, PG 64-22, 0.3 TO < 3 MILLION ESALS, 4 1/2" DEPTH	SUBBASE 6" DEPTH (NO. 2A)	SUPERPAVE ASPHALT MIXTURE DESIGN, WMA WEARING COURSE, PG 64-22, 0.3 TO < 3 MILLION ESALS, 9.5 MM MIX, 1 1/2" DEPTH, SRL-G	SUPERPAVE ASPHALT MIXTURE DESIGN, WMA WEARING COURSE (LEVELING), PG 64-22, 0.3 TO < 3 MILLION ESALS, 9.5 MM MIX, SRL-L	SUPERPAVE ASPHALT MIXTURE DESIGN, WMA BINDER COURSE, PG 64-22, 0.3 TO < 3 MILLION ESALS, 19.0 MM MIX, 2 1/2" DEPTH	BITUMINOUS TACK COAT (NTT/CNTT)	MILLING OF BITUMINOUS PAVEMENT SURFACE, 2" DEPTH, MILLED MATERIAL RETAINED BY CONTRACTOR	6" PAVEMENT BASE DRAIN	ADDITIONAL COARSE AGGREGATE FOR EXTRA DEPTH PAVEMENT BASE DRAIN	6" SUBSURFACE DRAIN OUTLETS	SUBSURFACE DRAIN OUTLET ENDWALL	66" RED SUBSURFACE DRAIN OUTLET MARKER	PLAIN CEMENT CONCRETE CURB, INCLUDING REMOVAL OF EXISTING CURB	REMOVE, STORE, AND RESET EXISTING BOLLARDS AND GATE	REMARKS	SIDE	STATIONS	
																							0203 0001 CY
			35										35									RT	5+25.00 to 5+60.00
								122		3.4			245	123							MILL AND OVERLAY	LT / RT	5+60.00 to 6+05.00
399	4.5	219	244	434	339	452	452	1105	18	452	2270	656	244	3.4	19	3	3	30	--		TOTALS		



DISTRICT	COUNTY	ROUTE	SECTION	SHEET
12-0	WESTMORELAND	T-184	EHS	11 OF 12
YOUNGWOOD BOROUGH/HEMPFIELD TOWNSHIP				
REVISION NUMBER	REVISIONS	DATE	BY	



BM #2 ELEV 948.07
 STA 3+17.62 36.0' LT
 SPIKE IN POLE# WPP CO 702122

EAST HILLIS ST
 CONSTR & SURVEY
 PI STA 3+17.89
 Δ = 27°06'14.07" LT
 D = 22°55'05.92"
 T = 60.26'
 L = 118.26'
 R = 250.00'
 E = 7.16'
 PC STA 2+57.63
 PT STA 3+75.89
 SE MATCH EXISTING

BM #1 ELEV 940.18
 STA 7+01.60 17.15' RT
 SPIKE IN POLE# BT CO 32 8

HYDRAULIC DATA

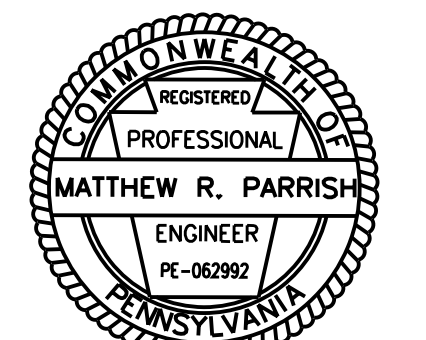
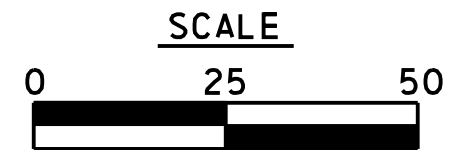
DRAINAGE AREA = 28.77 SQ. MI.
 DESIGN FLOOD:
 MAGNITUDE = 2980 C.F.S.
 FREQUENCY = 10 YEARS
 VELOCITY = 4.35 F.P.S.
 PERT. W. S. ELEV. = 940.40
 100 YR. FLOOD RISK ASSESSMENT:
 MAGNITUDE = 5600 C.F.S.
 VELOCITY = 3.60 F.P.S.
 W. S. ELEV. = 941.88
 FLOOD OF RECORD UNKNOWN

EXISTING STRUCTURE DATA
 STA 4+43.63
 TYPE - SINGLE SPAN NON-COMPOSITE ADJACENT BOX BEAM
 SPAN - 25'-6"
 UNDER CLEAR 9.0'
 CLEAR RDWY WIDTH 19'-10"

PROPOSED STRUCTURE DATA
 STA 4+44.00
 TYPE - SINGLE SPAN COMPOSITE P/S CONC. SPREAD BOX BEAM
 SPAN - 56'-0"
 UNDER CLEAR - 8'-8.4"
 SKEW - 78°00'00"
 RDWY WIDTH - 30'-3"
 STRUCTURE NO L-45
 RECOMMENDED -

LEGEND

- ① TYPE 31-S GUIDE RAIL
- ② TYPE 31-SC GUIDE RAIL
- ③ TYPICAL AND ALTERNATE CONCRETE BRIDGE BARRIER TRANSITION WITHOUT INLET PLACEMENT
- ④ TYPE 31 STRONG POST IN-LINE ANCHOR
- ⑤ TERMINAL SECTION, SINGLE



FOR PROFILE, SEE SHEET 12

SURVEY BOOK NO. L53-001

PROJECT NO. 12-000000-001
 DATE PLOTTED: 12/29/2019 8:38:27 AM
 USER: MARIANNE

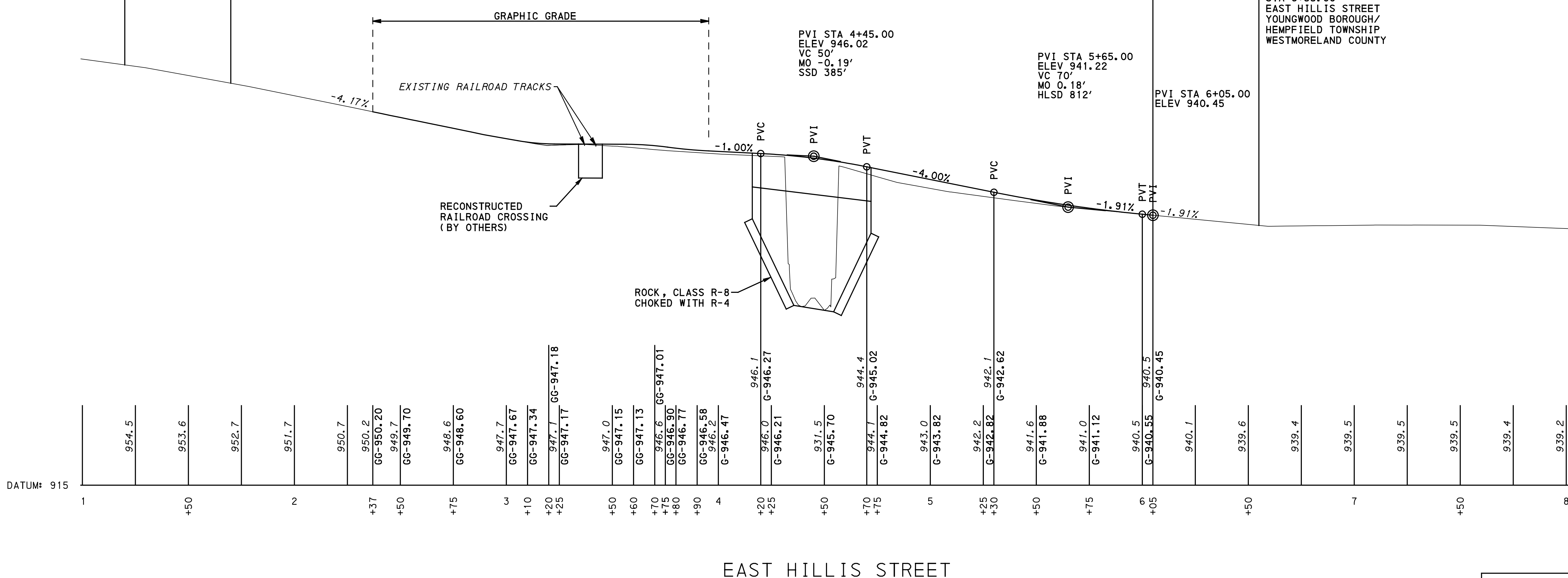
DISTRICT	COUNTY	ROUTE	SECTION	SHEET
12-0	WESTMORELAND	T-184	EHS	12 OF 12
YOUNGWOOD BOROUGH/HEMPFIELD TOWNSHIP				
REVISION NUMBER	REVISIONS			DATE BY

LIMIT OF WORK
 STA 1+20.00
 EAST HILLIS STREET
 HEMPFIELD TOWNSHIP
 WESTMORELAND COUNTY

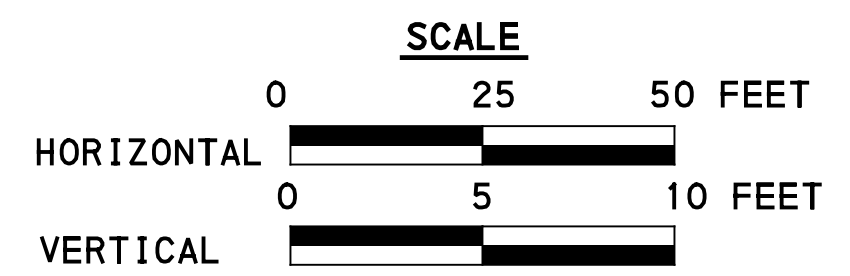
START WORK
 STA 1+70.00
 EAST HILLIS STREET

STOP WORK
 STA 6+05.00
 EAST HILLIS STREET

LIMIT OF WORK
 STA 6+55.00
 EAST HILLIS STREET
 YOUNGWOOD BOROUGH/
 HEMPFIELD TOWNSHIP
 WESTMORELAND COUNTY



EAST HILLIS STREET



PLAN - SEE SHEET 11

FILE NAME: C:\WORKSPACE\CONSTRUCTION\BTR\BTR.dwg
 APPROPRIATION: WESTMORELAND COUNTY
 PROJECT: EAST HILLIS STREET
 DATE PLOTTED: 9/27/2009 6:02:44 PM
 USER: MATHIEU.PARRISH

