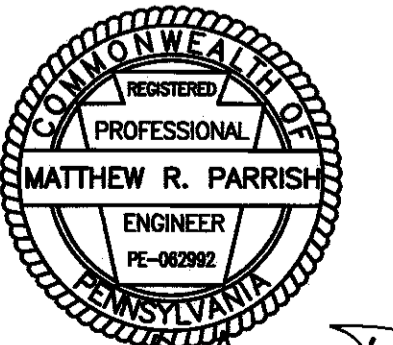
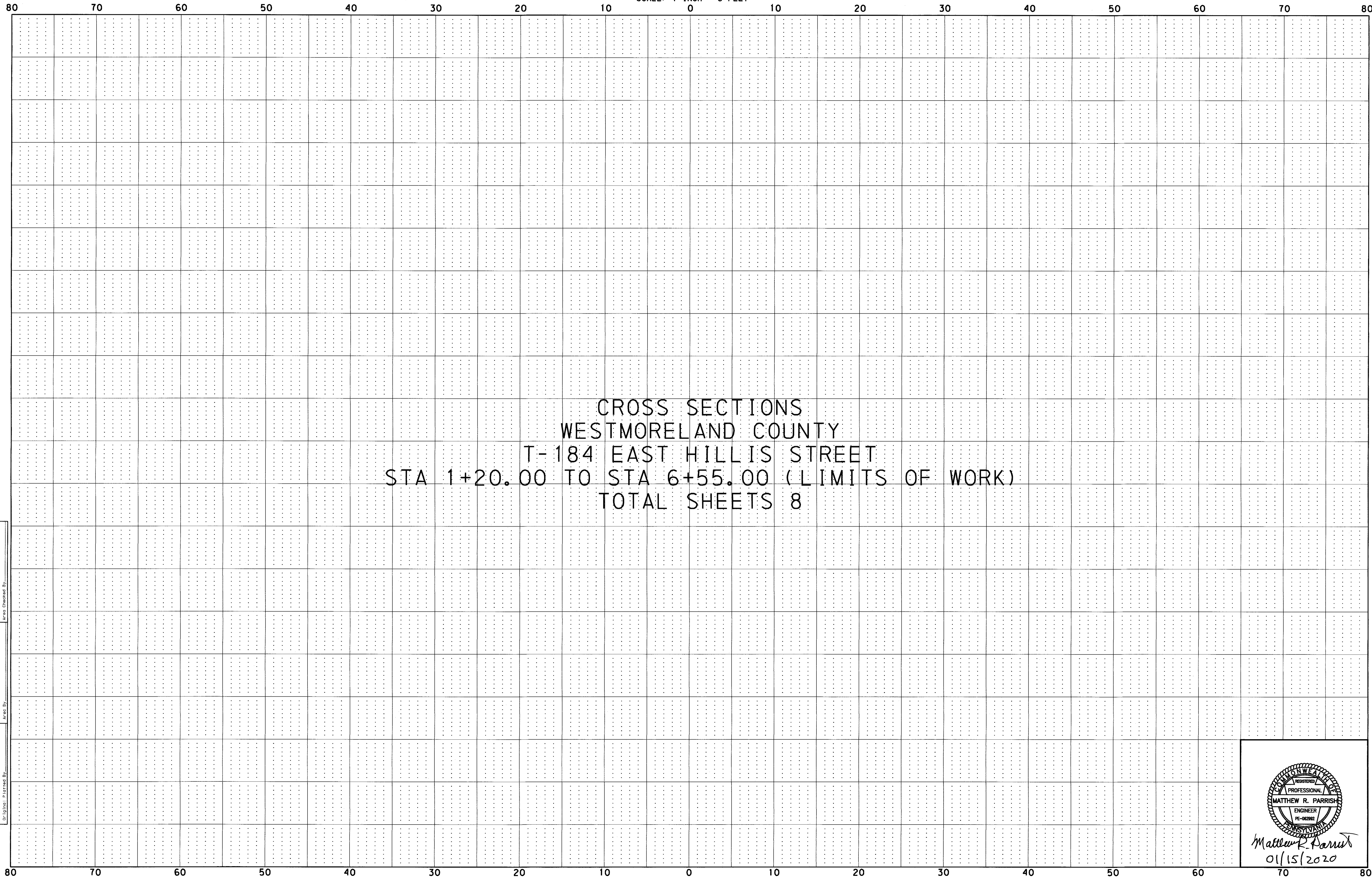


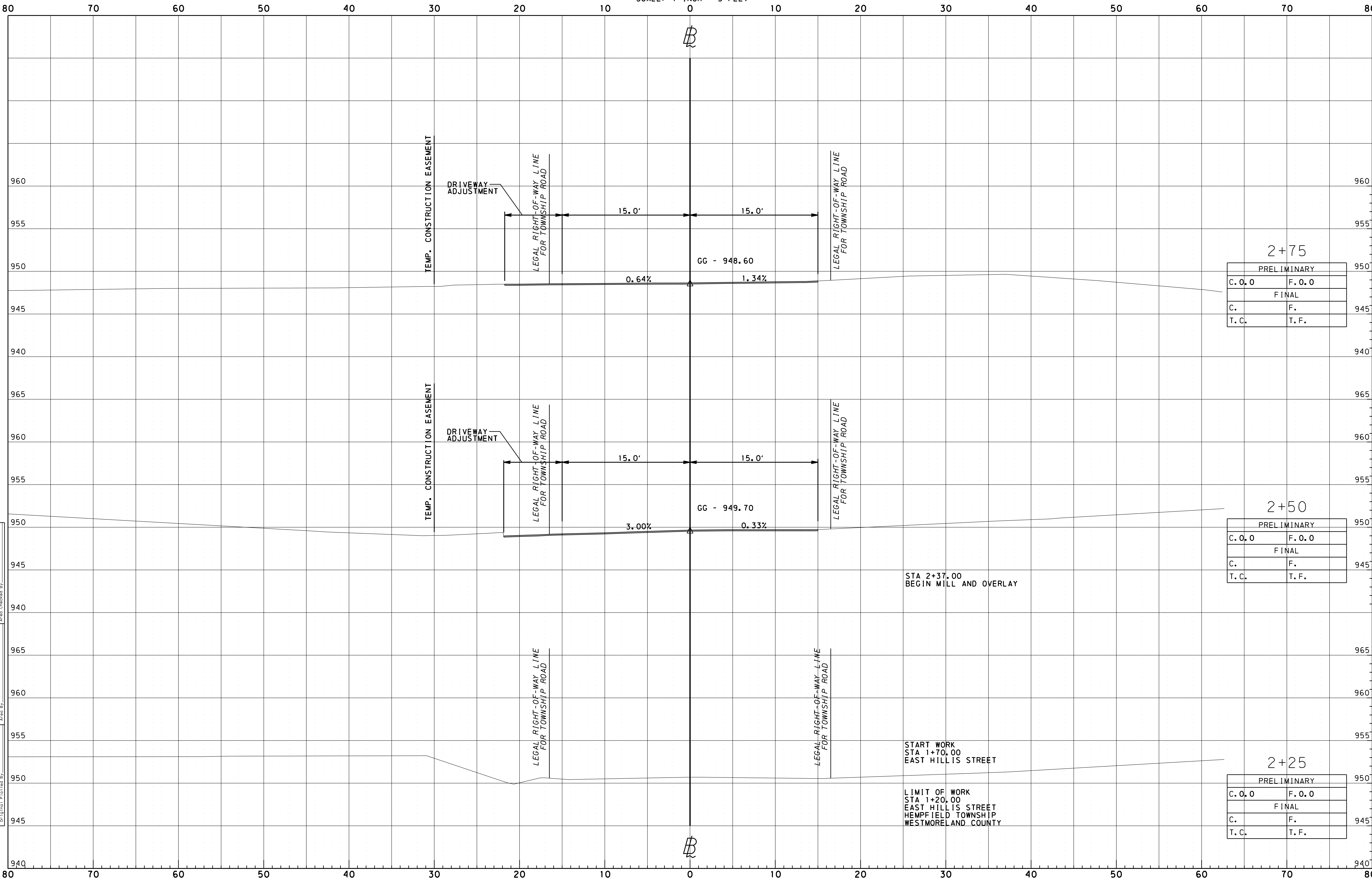
OPERATOR: T:\Projects\YOUIN\YOUIN1501-East Hillis Street Br1.dgn
FILE NAME: T:\Projects\YOUIN\YOUIN1501-East Hillis Street Br1.dgn
DESIGN: CT\DCN\REF\YOUIN1501_CON_XSEC_TI.dgn
11/19/2019

Application No. _____
Route No. _____
Original Plotted By _____
Original Checked By _____
Temp. Plotted By _____
Temp. Checked By _____
Area Plotted By _____
Area Checked By _____



Matthew R. Parrish
01/15/2020

OPERATOR: T:\Projects\YOUNG\YOUNG1501-East Hillis Street Bridge\DESIGN\CDON\REF\1501PRxs.dgn
 11/19/2019
 Application No. _____
 Route No. _____
 Original Plotted By _____
 Plotted By _____
 Finals Checked By _____
 Area By _____
 Template By _____
 Area Checked By _____



2+75

PRELIMINARY	
C.O.O	F.O.O
FINAL	
C.	F.
T.C.	T.F.

2+50

PRELIMINARY	
C.O.O	F.O.O
FINAL	
C.	F.
T.C.	T.F.

2+25

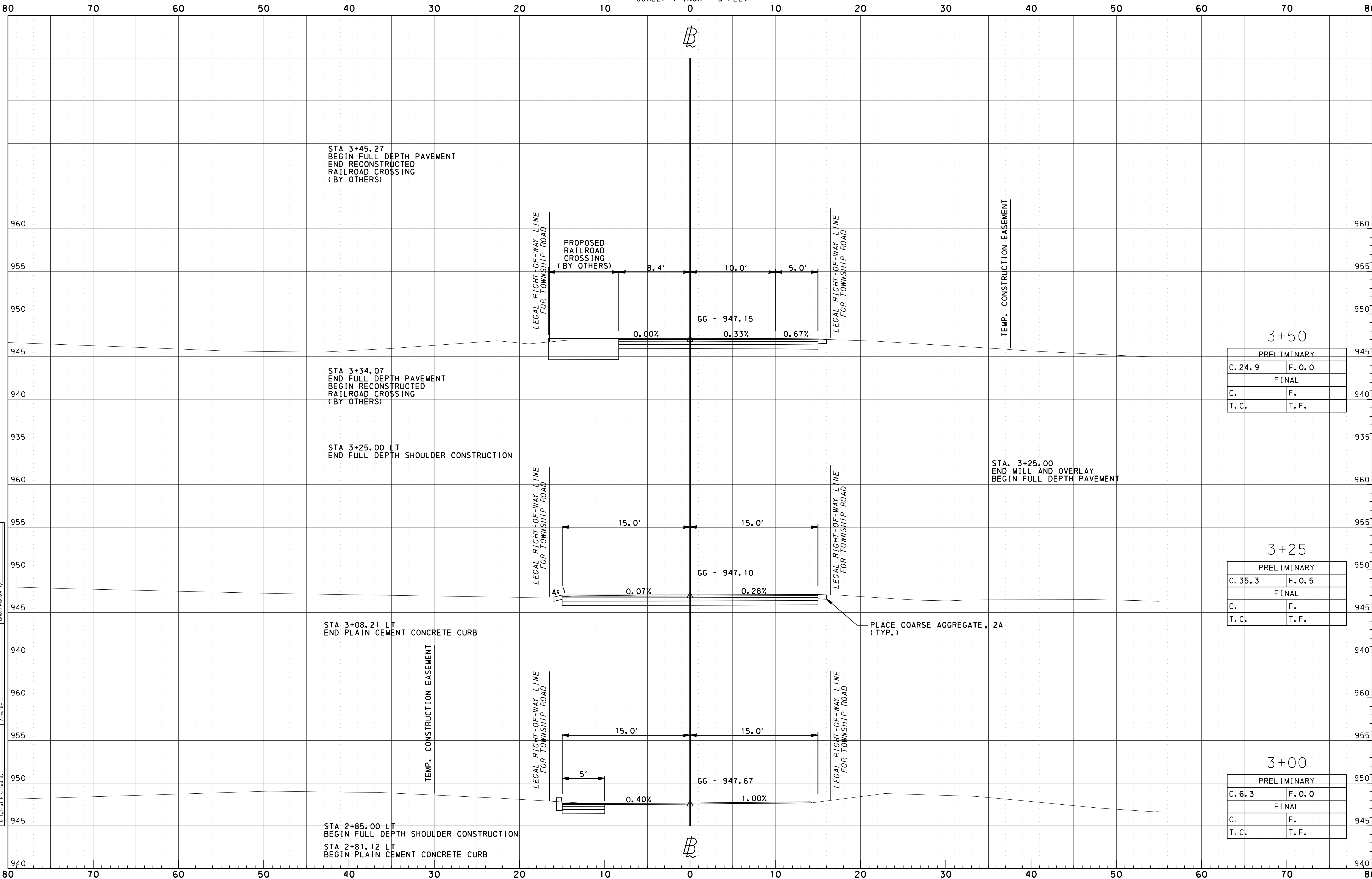
PRELIMINARY	
C.O.O	F.O.O
FINAL	
C.	F.
T.C.	T.F.

STA 2+37.00
 BEGIN MILL AND OVERLAY

START WORK
 STA 1+70.00
 EAST HILLIS STREET

LIMIT OF WORK
 STA 1+20.00
 EAST HILLIS STREET
 HEMPFIELD TOWNSHIP
 WESTMORELAND COUNTY

OPERATOR: T:\Projects\YOUNG\UNIT501-East Hillis Street Bridge\DESIGN\CT\CON\REF\1501PRxs.dgn
 FILE NAME: T:\Projects\YOUNG\UNIT501-East Hillis Street Bridge\DESIGN\CT\CON\REF\1501PRxs.dgn
 Application No. _____
 Route No. _____
 Original Plotted By: _____
 Plotted By: _____
 Date: _____
 Original Checked By: _____
 Template By: _____
 Area By: _____
 Final Plotted By: _____
 Final Checked By: _____
 Area Checked By: _____



3+50

PRELIMINARY	
C. 24.9	F. 0.0
FINAL	
C.	F.
T.C.	T.F.

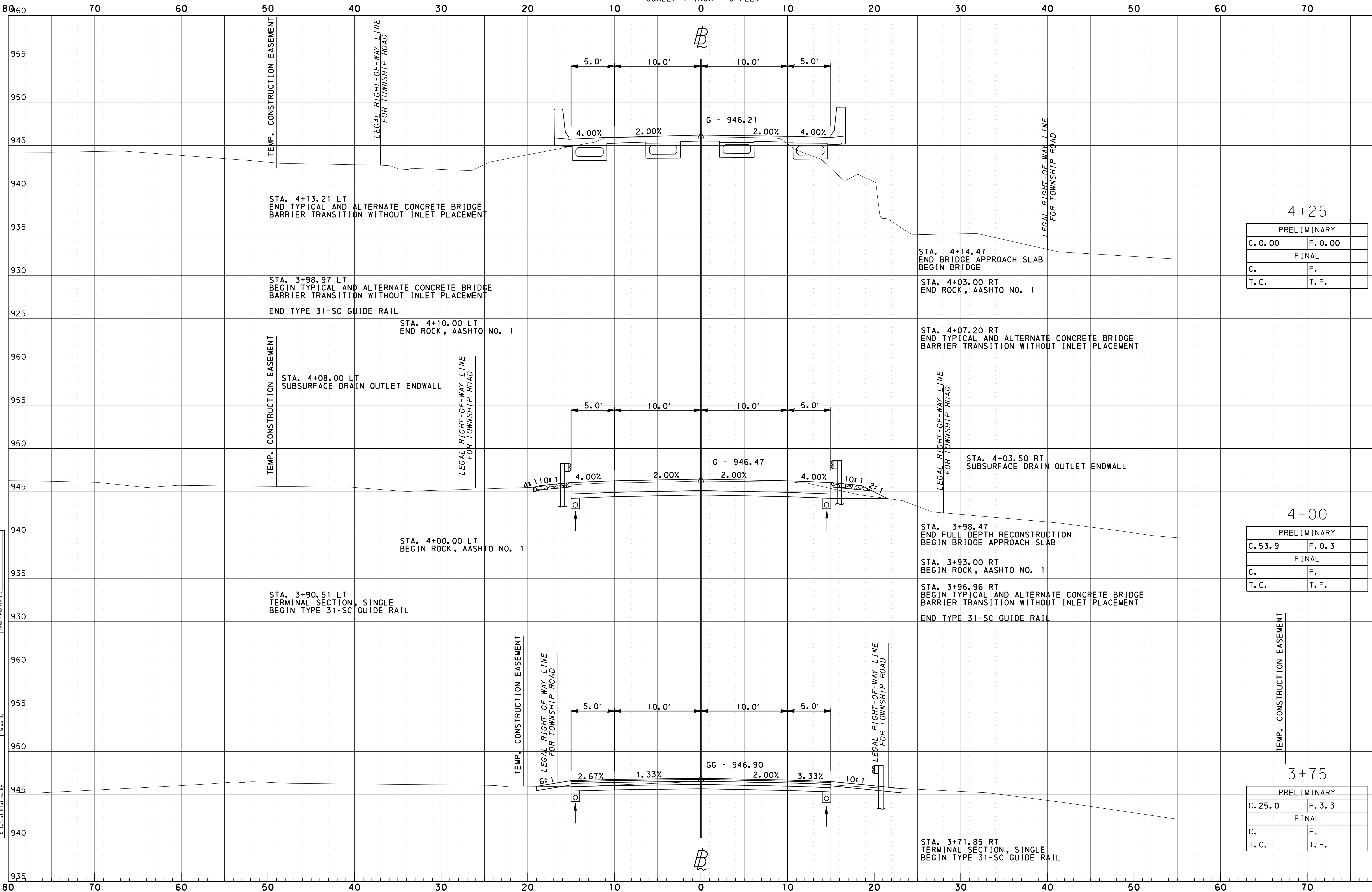
3+25

PRELIMINARY	
C. 35.3	F. 0.5
FINAL	
C.	F.
T.C.	T.F.

3+00

PRELIMINARY	
C. 6.3	F. 0.0
FINAL	
C.	F.
T.C.	T.F.

OPERATOR: T:\Projects\YOUNG\YOUNG1501-East Hillis Street Bridge\DESIGN\CT\CON\REF\1-1501PRxs.dgn
 11/19/2019
 Plotted By: [Blank]
 Plotted Date: [Blank]
 Original Plotted By: [Blank]
 Original Plotted Date: [Blank]
 Original Checked By: [Blank]
 Original Date: [Blank]
 Template By: [Blank]
 Area Checked By: [Blank]



4+25

PRELIMINARY	
C. 0.00	F. 0.00
FINAL	
C.	F.
T.C.	T.F.

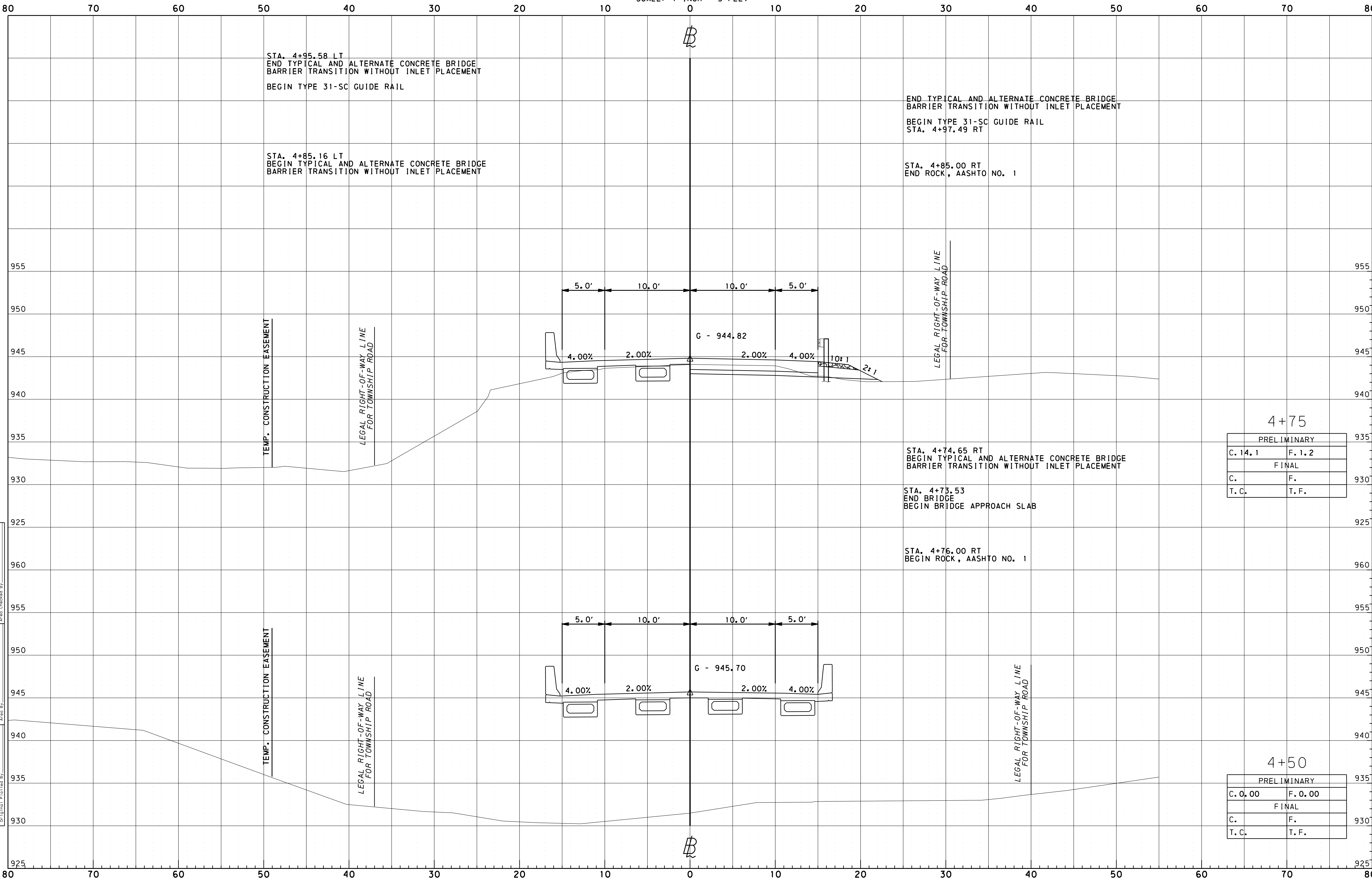
4+00

PRELIMINARY	
C. 53.9	F. 0.3
FINAL	
C.	F.
T.C.	T.F.

3+75

PRELIMINARY	
C. 25.0	F. 3.3
FINAL	
C.	F.
T.C.	T.F.

OPERATOR: Tr \Projects\YOUNG\YOUNG1501-East Hillis Street Bridge\DESIGN\CT\CON\REF\1501PRxs.dgn
 FILE NAME: Tr \Projects\YOUNG\YOUNG1501-East Hillis Street Bridge\DESIGN\CT\CON\REF\1501PRxs.dgn
 11/19/2019
 Application No. _____
 Route No. _____
 Original Plotted By _____
 Plotted By _____
 Checked By _____
 Area By _____
 Temp. By _____
 Area Checked By _____



STA. 4+95.58 LT
 END TYPICAL AND ALTERNATE CONCRETE BRIDGE
 BARRIER TRANSITION WITHOUT INLET PLACEMENT
 BEGIN TYPE 31-SC GUIDE RAIL

STA. 4+85.16 LT
 BEGIN TYPICAL AND ALTERNATE CONCRETE BRIDGE
 BARRIER TRANSITION WITHOUT INLET PLACEMENT

END TYPICAL AND ALTERNATE CONCRETE BRIDGE
 BARRIER TRANSITION WITHOUT INLET PLACEMENT
 BEGIN TYPE 31-SC GUIDE RAIL
 STA. 4+97.49 RT

STA. 4+85.00 RT
 END ROCK, AASHTO NO. 1

STA. 4+74.65 RT
 BEGIN TYPICAL AND ALTERNATE CONCRETE BRIDGE
 BARRIER TRANSITION WITHOUT INLET PLACEMENT

STA. 4+73.53
 END BRIDGE
 BEGIN BRIDGE APPROACH SLAB

STA. 4+76.00 RT
 BEGIN ROCK, AASHTO NO. 1

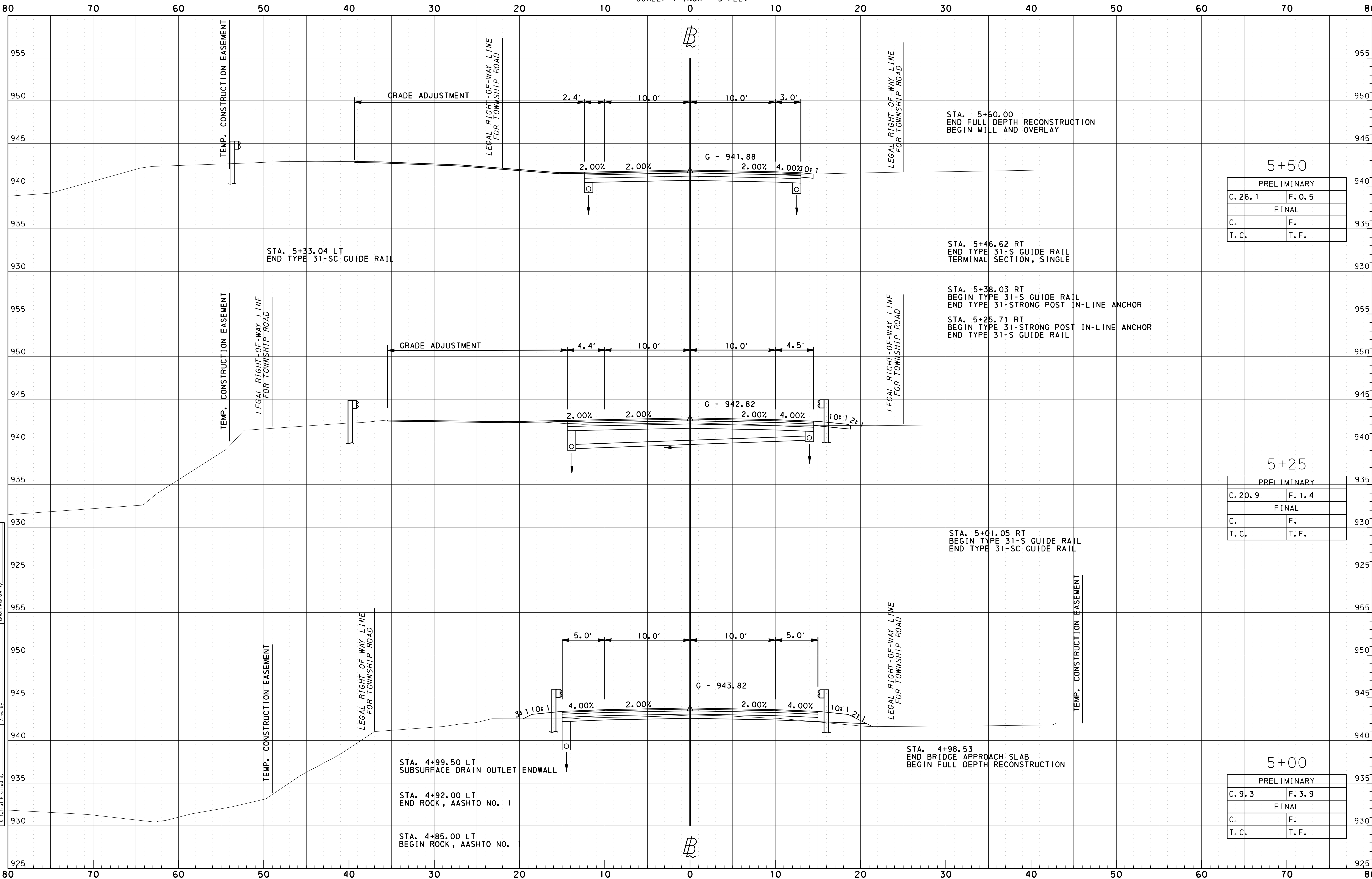
4+75

PRELIMINARY	
C. 14.1	F. 1.2
FINAL	
C.	F.
T.C.	T.F.

4+50

PRELIMINARY	
C. 0.00	F. 0.00
FINAL	
C.	F.
T.C.	T.F.

OPERATOR: T:\Projects\YOUNG\YOUNG1501-East Hillis Street Bridge\DESIGN\CT\CONREF\1501PRxs.dgn
 11/19/2019
 Original Plotted By: _____
 Plotted By: _____
 Application No.: _____
 Route No.: _____
 Original Plotted By: _____
 Template By: _____
 Area By: _____
 Area Checked By: _____
 Plotted By: _____
 Area Checked By: _____



5+50

PRELIMINARY	
C. 26.1	F. 0.5
FINAL	
C.	F.
T.C.	T.F.

5+25

PRELIMINARY	
C. 20.9	F. 1.4
FINAL	
C.	F.
T.C.	T.F.

5+00

PRELIMINARY	
C. 9.3	F. 3.9
FINAL	
C.	F.
T.C.	T.F.

STA. 5+33.04 LT
 END TYPE 31-SC GUIDE RAIL

STA. 5+60.00
 END FULL DEPTH RECONSTRUCTION
 BEGIN MILL AND OVERLAY

STA. 5+46.62 RT
 END TYPE 31-S GUIDE RAIL
 TERMINAL SECTION, SINGLE

STA. 5+38.03 RT
 BEGIN TYPE 31-S GUIDE RAIL
 END TYPE 31-STRONG POST IN-LINE ANCHOR

STA. 5+25.71 RT
 BEGIN TYPE 31-STRONG POST IN-LINE ANCHOR
 END TYPE 31-S GUIDE RAIL

STA. 5+01.05 RT
 BEGIN TYPE 31-S GUIDE RAIL
 END TYPE 31-SC GUIDE RAIL

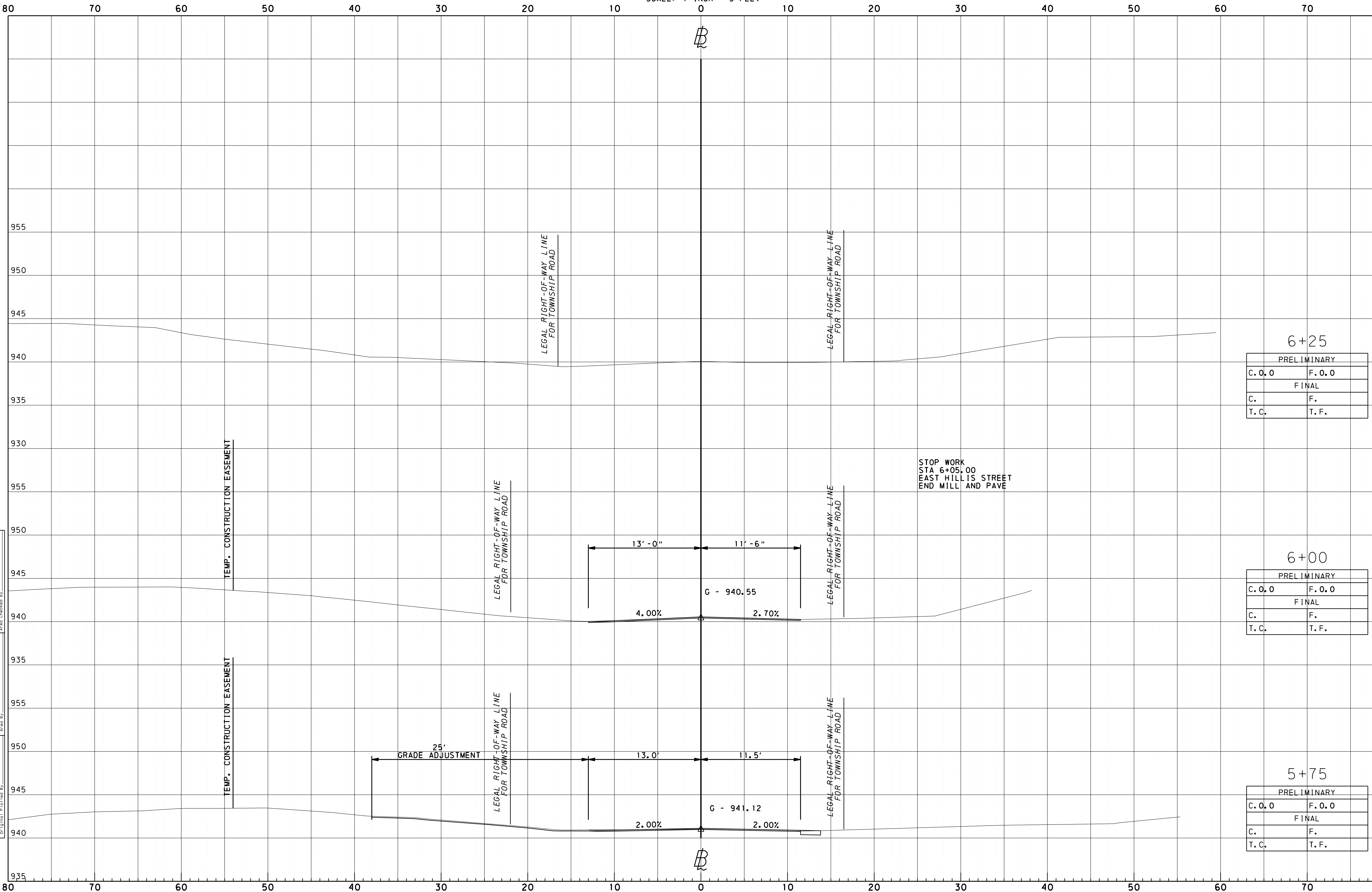
STA. 4+99.50 LT
 SUBSURFACE DRAIN OUTLET ENDWALL

STA. 4+92.00 LT
 END ROCK, AASHTO NO. 1

STA. 4+85.00 LT
 BEGIN ROCK, AASHTO NO. 1

STA. 4+98.53
 END BRIDGE APPROACH SLAB
 BEGIN FULL DEPTH RECONSTRUCTION

OPERATOR: T:\Projects\YOUNG\YOUNG1501-East Hillis Street Bridge\DESIGN\CT\CON\REF\1501PRxs.dgn
 11/19/2019
 Application No. _____
 Route No. _____
 Original Plotted By _____
 Original Checked By _____
 Template By _____
 Area By _____
 Plotted By _____
 Plotted Checked By _____
 Area Checked By _____



6+25

PRELIMINARY	
C. O. O	F. O. O
FINAL	
C.	F.
T. C.	T. F.

6+00

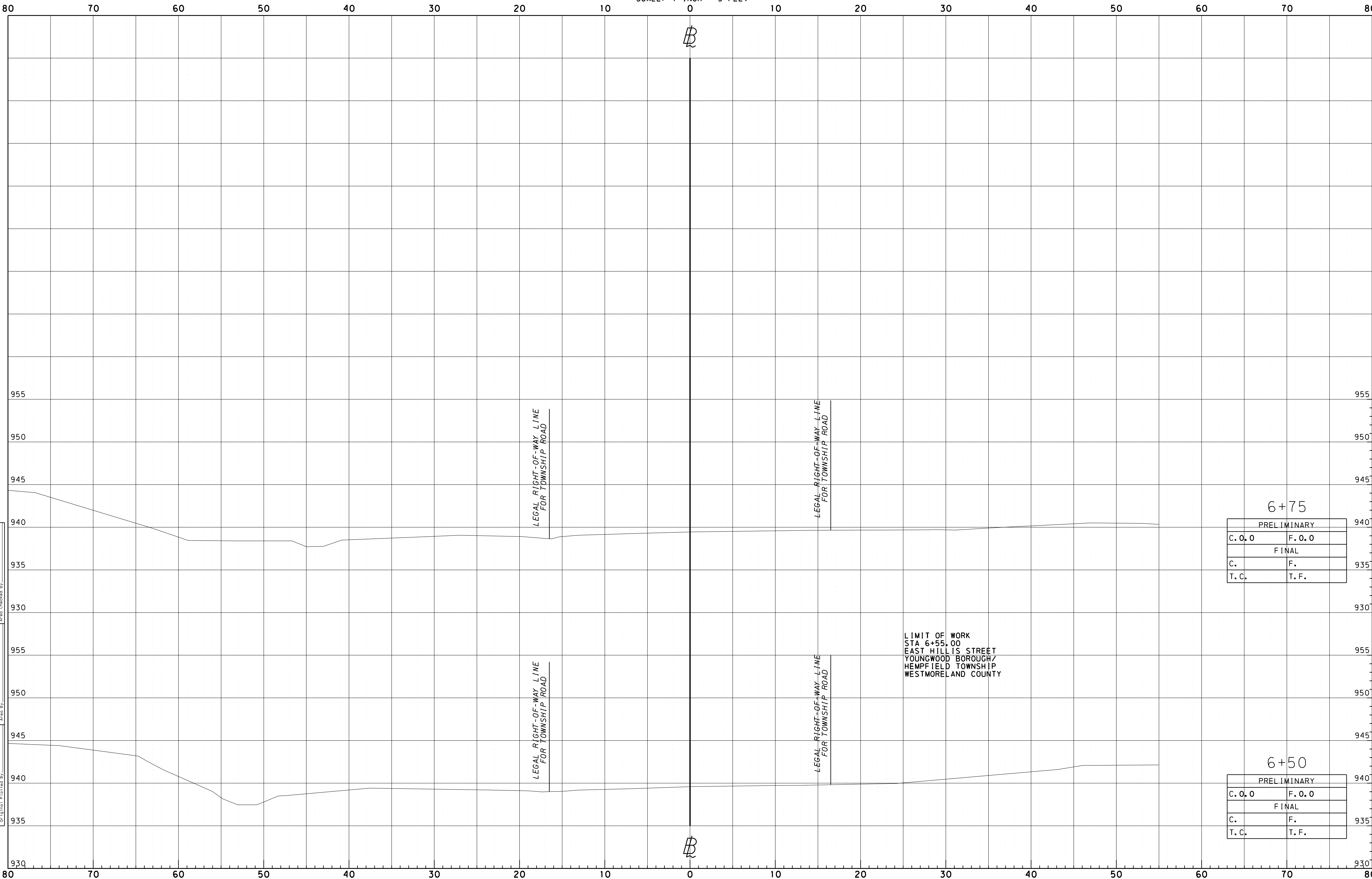
PRELIMINARY	
C. O. O	F. O. O
FINAL	
C.	F.
T. C.	T. F.

5+75

PRELIMINARY	
C. O. O	F. O. O
FINAL	
C.	F.
T. C.	T. F.

11/19/2019
OPERATOR: T:\Projects\YOUNG\YOUNT1501-East Hillis Street Bridge\DESIGN\CT\DCN\REF\1501PRxs.dgn

Finals Plotted By	Original Checked By
Finals Checked By	Template By
Area By	Area By
Area Checked By	Area By
Application No.	Original Plotted By
Route No.	



6+75

PRELIMINARY	
C. O. O	F. O. O
FINAL	
C.	F.
T. C.	T. F.

LIMIT OF WORK
STA 6+55.00
EAST HILLIS STREET
YOUNGWOOD BOROUGH/
HEMPFIELD TOWNSHIP
WESTMORELAND COUNTY

6+50

PRELIMINARY	
C. O. O	F. O. O
FINAL	
C.	F.
T. C.	T. F.