

- LIGHTING** *NOTE: LETTER @ SYMBOL DENOTES FEATURE TYPE. TYPICAL
- 4 CEILING MOUNT LIGHT FEATURE
 - 9 PENDANT MOUNT LIGHT FEATURE
 - 0 PENDANT MOUNTED LIGHT FEATURE
 - 0 WALL MOUNT LIGHT FEATURE
 - 0 EXT SIGN FEATURE (SINGLE FACE UNIVERSAL MOUNT INDICATED)
 - 0 EXT SIGN FEATURE (BIDIRECTIONAL ARROWS DOUBLE FACE UNIVERSAL MOUNT INDICATED)
 - S SWITCH SINGLE POLE
 - S₁ SWITCH 2-WAY
 - S₄ SWITCH 4-WAY
 - S_{WP} SWITCH WEATHERPROOF
 - OS OCCUPANCY SENSOR
 - EMERGENCY BATTERY PACK FEATURE WITH TWO HEADS
 - EMERGENCY BATTERY PACK FEATURE WITH TWO HEADS AND EXIT SIGN
 - REMOTE SINGLE HEAD (DC POWERED)
 - REMOTE DOUBLE HEAD (DC POWERED)

- MISCELLANEOUS:**
- 1 EQUIPMENT IDENTIFICATION
 - 2 SECTION IDENTIFICATION
 - 3 SECTION NOMENCLATURE
 - 4 SHEET NUMBER ON WHICH SECTION IS SHOWN
 - 5 BLOOD PLANS
 - 6 DETAIL IDENTIFICATION
 - 7 DETAIL NOMENCLATURE
 - 8 SHEET NUMBER ON WHICH DETAIL IS SHOWN
- CONDUIT FEEDERS & BRANCH CIRCUITS:**
- CONDUIT - EXPOSED
 - CONDUIT - AS NOTED
 - CONDUIT TURNS NOTED
 - CONDUIT CAPED
 - CIRCUIT HOME RUN
 - DUPLICATE (PROG. G.R.C.)
 - TYPICAL FEEDER WITH NO SIZE IDENTIFICATION
 - BY DEFAULT: 1/2" (2) 1/2" (2) GROUNDING
 - BY DEFAULT: 1/2" (2) 1/2" (2) GROUNDING
 - ALL OTHER FEEDERS WILL BE IDENTIFIED.

- ABBREVIATIONS:**
- | | | | |
|------|------------------------------|------|--|
| A | AMPERE | AC | ALTERNATING CURRENT |
| AC | ALTERNATING CURRENT | AF | ABOVE FINISHED FLOOR |
| AF | ABOVE FINISHED FLOOR | AFG | ABOVE FINISHED GRADE |
| AC | AMPERE INTERRUPTING CAPACITY | GR | GROUND FAULT INTERRUPTER |
| AS | AMMETER SELECTOR SWITCH | GRD | GROUND |
| ATS | AUTO TRANSFER SWITCH | HD | HIGH INTENSITY DISCHARGE |
| AUTO | AUTOMATIC | HP | HORSEPOWER |
| AWG | AMERICAN WIRE GAUGE | HWC | HEAT-WHIE-LAIR CONDITIONING |
| BLDG | BUILDING | IS | ISOLATED GROUND |
| C | CONDUIT OR CONDUCTOR | IND | INDUSTRIAL |
| CCTV | CLOSED CIRCUIT TELEVISION | INDV | INDIVIDUALLY SHIELDED/OVERALL SHIELDED |
| COAX | COAXIAL CABLE | JBX | JUNCTION BOX |
| CP | CONTROL PANEL | RLW | RELOWAIT |
| CPT | CONTROL POWER TRANSFORMER | WA | WALWART |
| CR | CORROSION RESISTANT | KV | KILOVOLT |
| CT | CURRENT TRANSFORMER | LA | LIGHTNING ARRESTOR |
| DISC | DISCONNECT | LC | LIGHTING CONTACTOR |
| DIV | DIVISION | LTS | LIGHTING |
| DN | DOWN | MC | MEDIA CONVERTER |
| DS | DISCONNECT SWITCH | MLO | MAIN LUG ONLY |
| EC | ELECTRICAL CONTRACTOR | MCA | MULTI OUTLET ASSEMBLY |
| ESB | ENCLOSED CIRCUIT BREAKER | MOD | MOTOR OPERATED DAMPER |
| ENT | ELECTRICAL METALLIC TUBING | MTD | MOUNTED |
| EF | EXHAUST FAN | MM | MULTI WIRE |
| EFO | ETHERNET/FIBER OPTIC | NA | NOT APPLICABLE |
| ES | ELEVATOR OUT-OF-SERVICE | NAC | NOTIFICATION APPLIANCE CIRCUIT |
| ETR | EXISTING TO REMAIN | NC | NORMALLY CLOSED |
| EUH | ELECTRIC UNIT HEATER | NO | NORMALLY OPEN |
| FAH | FIRE ALARM ANNUNCIATOR PANEL | No. | NUMBER |
| FAPZ | FIRE ALARM CONTROL PANEL | OH | OVERHEAD |
| FLA | FULL LOAD AMPS | PAT | PAD MOUNTED TRANSFORMER |

GENERAL POWER:

- 1 - DENOTES MOUNTED ABOVE COUNTER TOP
- 2 - DENOTES MOUNTED BELOW COUNTER TOP
- 3 - DENOTES SPECIFIC DEVICE REQUIREMENTS SEE WP
- 4 - DENOTES VARIATIONS
- 5 - QUADRUPLEX RECEPTACLE
- 6 - SPECIAL RECEPTACLE AS NOTED
- 7 - JUNCTION BOX
- 8 - DISCONNECT SWITCH (NON-USED)
- 9 - DISCONNECT SWITCH, FUSED
- 10 - PANELBOARD
- 11 - MOTOR
- 12 - TRANSFORMER
- 13 - ELECTRICAL EQUIPMENT, AS IDENTIFIED
- S₁ - MANUAL MOTOR STARTER
- S₂ - DOWNSTOPPER SWITCH (DOOR OPENER)

MONROE COUNTY TRANSPORTATION AUTHORITY

134 MCTA DRIVE, SWIFTWATER, PA 18370

SWIFTWATER BUS WASH DESIGN SERVICES

AMP	AMPERE	AP	APPROXIMATE
AR	ARCHITECTURAL	AS	AS NOTED
AS	AMMETER SELECTOR SWITCH	AT	AUTO TRANSFER SWITCH
AT	AUTO TRANSFER SWITCH	AWG	AMERICAN WIRE GAUGE
AV	AVOID	B	BY DEFAULT
AWG	AMERICAN WIRE GAUGE	B	BY DEFAULT
B	BY DEFAULT	C	CONDUIT OR CONDUCTOR
BLDG	BUILDING	CCTV	CLOSED CIRCUIT TELEVISION
BLDG	BUILDING	COAX	COAXIAL CABLE
BOSS	BUS	CP	CONTROL PANEL
BOSS	BUS	CPT	CONTROL POWER TRANSFORMER
BR	BUS	CR	CORROSION RESISTANT
BR	BUS	CT	CURRENT TRANSFORMER
BS	BUS	DISC	DISCONNECT
BS	BUS	DIV	DIVISION
BS	BUS	DN	DOWN
BS	BUS	DS	DISCONNECT SWITCH
BS	BUS	EC	ELECTRICAL CONTRACTOR
BS	BUS	ESB	ENCLOSED CIRCUIT BREAKER
BS	BUS	ENT	ELECTRICAL METALLIC TUBING
BS	BUS	EF	EXHAUST FAN
BS	BUS	EFO	ETHERNET/FIBER OPTIC
BS	BUS	ES	ELEVATOR OUT-OF-SERVICE
BS	BUS	ETR	EXISTING TO REMAIN
BS	BUS	EUH	ELECTRIC UNIT HEATER
BS	BUS	FAH	FIRE ALARM ANNUNCIATOR PANEL
BS	BUS	FAPZ	FIRE ALARM CONTROL PANEL
BS	BUS	FLA	FULL LOAD AMPS

GENERAL NOTES:

- DRAWINGS ARE DIAGRAMATIC IN NATURE. CONTRACTOR SHALL VERIFY DIMENSIONS PRIOR TO INSTALLATION. CONTRACTOR SHALL COORDINATE ALL WORK WITH OTHER DISCIPLINE TRADES TO PROVIDE A COMPLETE AND OPERABLE SYSTEM. CONTRACTOR SHALL COORDINATE LOCATION OF FEATURES, DEVICES, ETC. WITH OTHER TRADES PRIOR TO ANY FIELD WORK.
- ARCHITECTURAL FEATURES SHOWN ON THESE DRAWINGS ARE FOR BACKGROUND INFORMATION ONLY. REFER TO ARCHITECTURAL DRAWINGS FOR ACTUAL BUILDING CONSTRUCTION OF WALL AND CEILING. REFER TO INDUSTRIAL PLANS FOR ACTUAL LOCATION OF EQUIPMENT.
- ALL WORK SHALL BE PERFORMED AS REQUIRED BY APPLICABLE SECTION OF THE NATIONAL ELECTRICAL CODE 2014 EDITION, AND ALL COVERING LOCAL CODES, LAWS, AND/OR REGULATIONS.
- SYSTEM AND EQUIPMENT GROUNDING CONTINITY SHALL BE ASSURED AS REQUIRED BY APPLICABLE SECTIONS OF THE NATIONAL ELECTRICAL CODE.
- MINIMUM WIRING SHALL BE #12 POWER WIRE. ALL WIRE SHALL BE COPPER.
- MINIMUM CONDUIT SIZE SHALL BE 3/4". ALL CONDUIT SHALL BE RIBBID GALVANIZED STEEL (RGS) UNLESS OTHERWISE SPECIFIED IN ELECTRICAL SPECIFICATION SECTION 28.05.53.13.

GENERAL DEMOLITION NOTES:

- THE DEMOLITION DRAWINGS ARE DIAGRAMATIC IN NATURE AND INTENDED TO REPRESENT ONLY THE GENERAL SCOPE OF DEMOLITION. THE CONTRACTOR SHALL BE RESPONSIBLE FOR VERIFYING THE EXISTING CONDITIONS AND SHALL BE RESPONSIBLE FOR DETERMINING THE EXACT EXTENT OF THE ELECTRICAL DEMOLITION WORK REQUIRED UNDER THE SCOPE OF THIS PROJECT.
- EQUIPMENT DEVICES SHOWN AS DASHED AND/OR DASHED ON THE DEMOLITION PLANS AS SHALL BE REMOVED IN ENTIRETY UNLESS OTHERWISE NOTED.
- REMOVE ALL EXISTING CONDUIT AND WIRING THAT IS BEING ABANDONED.
- RELOCATE OR EXTEND EXISTING CIRCUITS NOT BEING ABANDONED AS REQUIRED TO ACCOMMODATE NEW WORK AND MAINTAIN CIRCUIT INTEGRITY.
- WORK SHALL BE DONE IN ACCORDANCE WITH THE REQUIREMENTS OF THE PERMIT WHERE APPLICABLE. MODIFY CONDUITS AS REQUIRED TO MAINTAIN CONTINUITY OF CIRCUIT TO OTHER EXISTING RECEPTACLES.
- UPGRADE EXISTING PANEL BOARD SIZES WHERE CIRCUITS ARE REMOVED. UNUSED CIRCUIT BREAKERS IN PANEL BOARDS SHALL BE PLACED IN THE OFF POSITION AND LABELED "SPARE".

SECURITY SYSTEM

- 1 DOOR CONTACT

PAGING SYSTEM

- 1 SPEAKER

FIRE ALARM SYSTEM:

- FAZP FIRE ALARM CONTROL PANEL
- FAPZ FIRE ALARM ANNUNCIATOR PANEL
- MS MANUAL PULL STATION
- SD SMOKE DETECTOR
- HT HEAT DETECTOR
- EMR FIRE ALARM HORNS/STROBE (1500 IF NOT NOTED FOR NEW DEVICES)
- EMR FIRE ALARM HORNS/STROBE (1500 IF NOT NOTED FOR NEW DEVICES)
- EMR FIRE ALARM HORNS/STROBE (INDICATES CANCEL RATING)
- EMR FIRE ALARM HORNS/STROBE (1500 IF NOT NOTED FOR NEW DEVICES)
- TS TAMPER SWITCH
- FS FLOW SWITCH

REVISIONS

NO.	DATE	DESCRIPTION

PERMIT SUBMITTAL

PROJECT NUMBER: 066091

DESIGNED: C/JG C/JG

MODELED: C/JG C/JG

CHECKED: R/LP R/LP

DATE: 06/04/2020

DRAWING TITLE: ELECTRICAL

COVER SHEET

DRAWING NO.: SHEET NO. OF: 001

SWIFTWATER BUS WASH DESIGN SERVICES

134 MCTA DRIVE, SWIFTWATER, PA 18370

MONROE COUNTY TRANSPORTATION AUTHORITY

REVISIONS

NO.	DATE	DESCRIPTION

PERMIT SUBMITTAL

PROJECT NUMBER: 066091

DESIGNED: C/JG C/JG

MODELED: C/JG C/JG

CHECKED: R/LP R/LP

DATE: 06/04/2020

DRAWING TITLE: ELECTRICAL

COVER SHEET

DRAWING NO.: SHEET NO. OF: 001

REVISIONS

NO.	DATE	DESCRIPTION

PERMIT SUBMITTAL

PROJECT NUMBER: 066091

DESIGNED: C/JG C/JG

MODELED: C/JG C/JG

CHECKED: R/LP R/LP

DATE: 06/04/2020

DRAWING TITLE: ELECTRICAL

COVER SHEET

DRAWING NO.: SHEET NO. OF: 001

REVISIONS

NO.	DATE	DESCRIPTION

PERMIT SUBMITTAL

PROJECT NUMBER: 066091

DESIGNED: C/JG C/JG

MODELED: C/JG C/JG

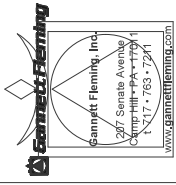
CHECKED: R/LP R/LP

DATE: 06/04/2020

DRAWING TITLE: ELECTRICAL

COVER SHEET

DRAWING NO.: SHEET NO. OF: 001



SWIFTWATER BUS WASH DESIGN SERVICES
 134 MCTA DRIVE, SWIFTWATER, PA 18370
 MONROE COUNTY TRANSPORTATION AUTHORITY



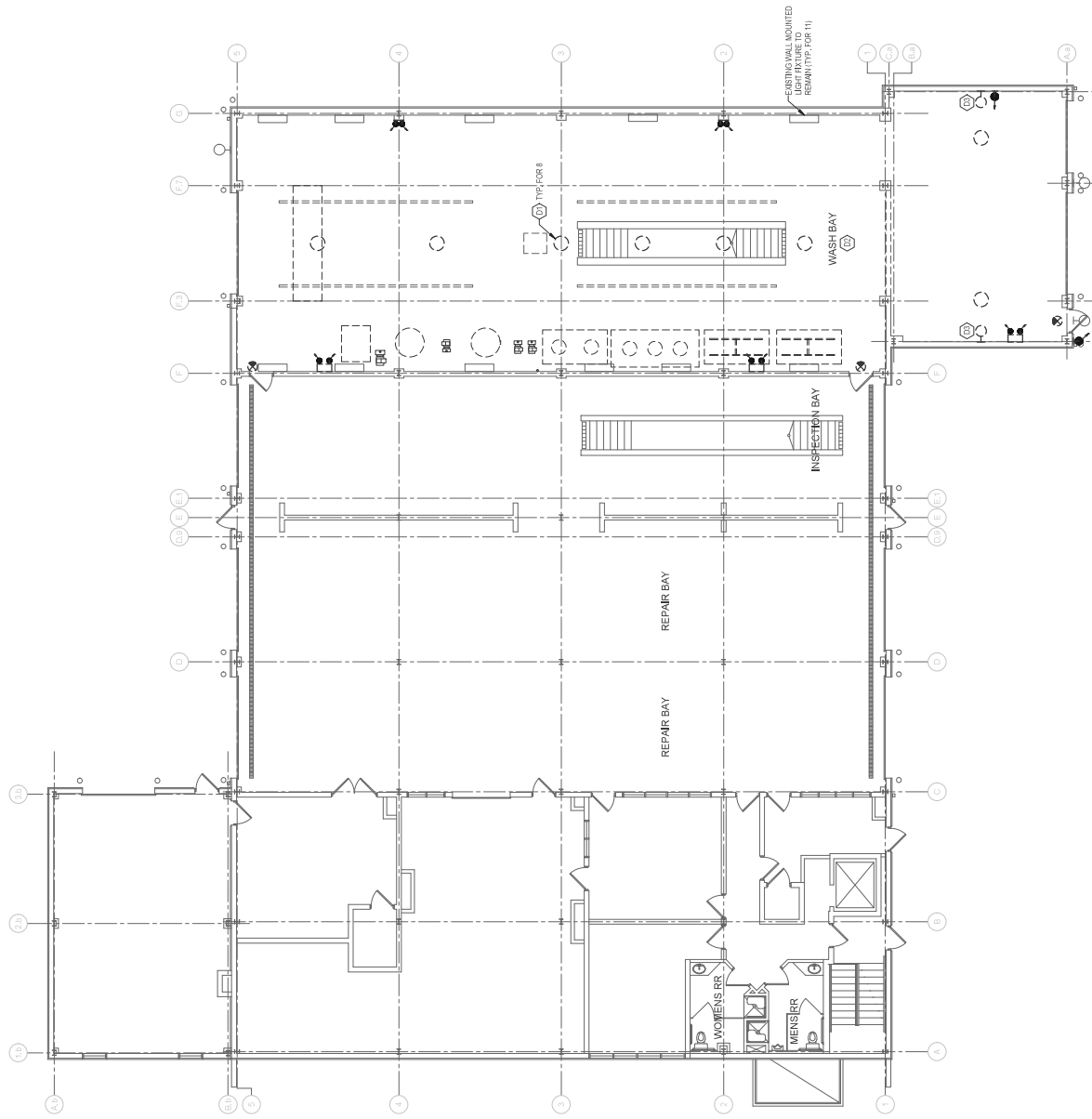
NO.	DATE	DESCRIPTION

REVISIONS
 PERMIT SUBMITTAL
 PROJECT NUMBER: 0660091
 DESIGNED: C/JG
 CHECKED: C/JG
 DATE: 05/28/2020
 DRAWING TITLE: ELECTRICAL

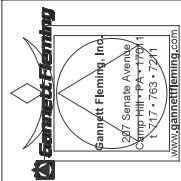
DEMOLITION - LIGHTING
 SHEET NO. OF: 100
E-100

DEMOLITION NOTES:

- 01 REMOVE PENDANT MOUNTED LIGHT FIXTURES INCLUDING ALL WIRING/CABLEING/CONDUIT. 2000 FIXTURES CURRENTLY CONTROLLED WITH CIRCUIT BREAKER IN PNL BAY
- 02 REMOVE ALL EXISTING 2' X 2' SQUARE RECESSED CEILING LIGHT FIXTURES INCLUDING WIRING/CABLEING/CONDUIT IN THE WASH BAY AND REPLACE PER THE NETWORK PLANS.
- 03 REMOVE WALL PACK FIXTURES IN ENTIRETY INCLUDING ALL WIRING/CABLEING/CONDUIT. 2000 FIXTURES CURRENTLY CONTROLLED WITH CIRCUIT BREAKER IN PNL BAY.



FIRST FLOOR PLAN
 SCALE: 1/8" = 1'-0"



SWIFTWATER BUS WASH DESIGN SERVICES
 134 MCTA DRIVE, SWIFTWATER, PA 18370
MONROE COUNTY TRANSPORTATION AUTHORITY



NO.	DATE	DESCRIPTION

PERMIT SUBMITTAL

PROJECT NUMBER: 066091

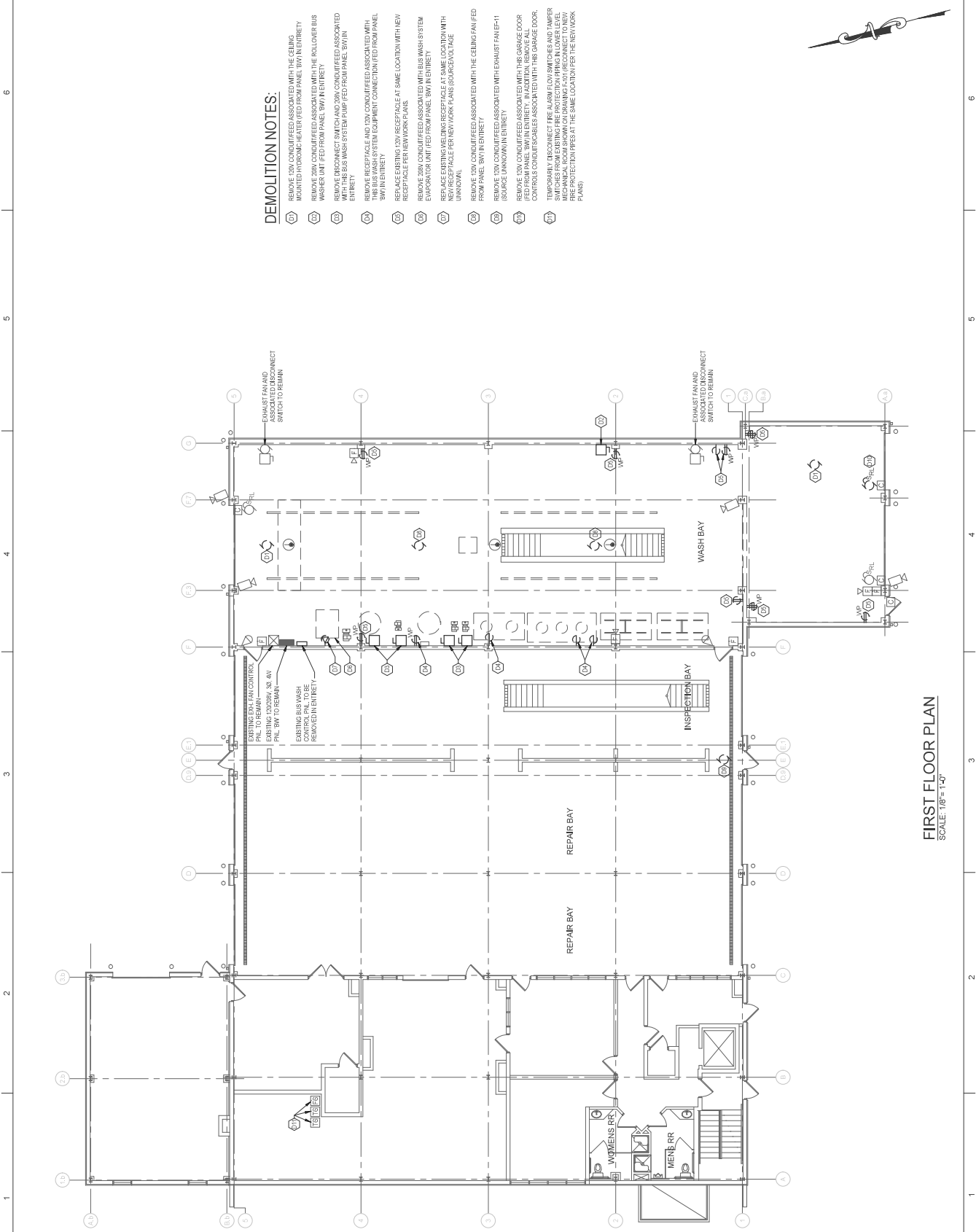
DESIGNED BY: C/JG CHECKED BY: R/LP

DATE: 05/28/2020 DRAWING TITLE: ELECTRICAL

DEMOLITION - POWER

DRAWING NO.: SHEET NO. OF: 100

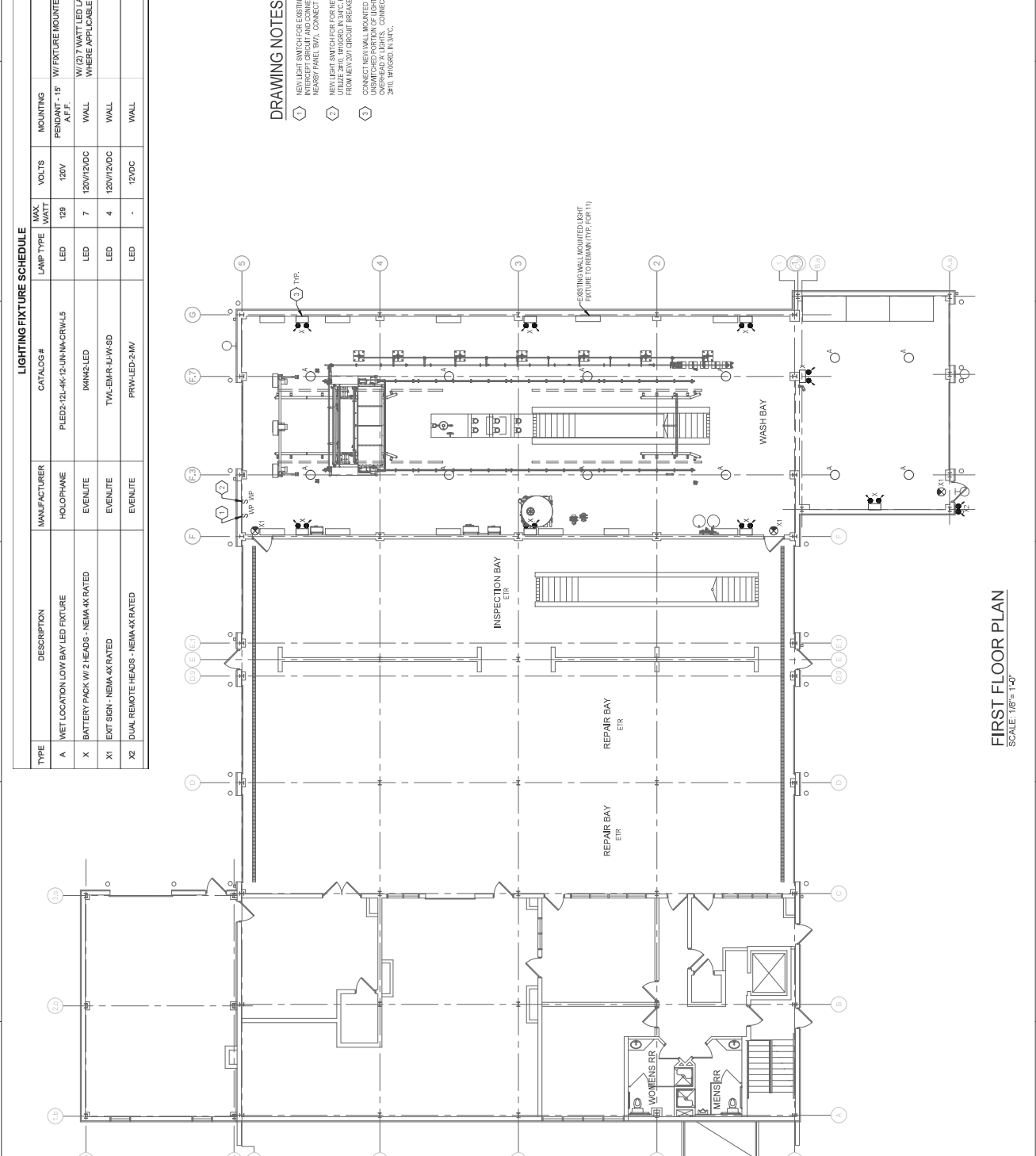
E-101



FIRST FLOOR PLAN
SCALE: 1/8" = 1'-0"

LIGHTING FIXTURE SCHEDULE

TYPE	DESCRIPTION	MANUFACTURER	CATALOG #	LAMP TYPE	MAX WATT	VOLTS	MOUNTING	REMARKS
A	WET LOCATION LOW BAY LED FIXTURE	HOLOPHONE	PLED2-12L-4K-12-IN-NK-CRW-LS	LED	128	120V	PENDANT - 15' A.F.F.	W/ FIXTURE MOUNTED ON OFFDRAINING PHOTOCELL SENSOR.
X	BATTERY PACK W/ 2 HEADS - NEMA 4X RATED	EVENUTE	IKANQ2-LED	LED	7	120V/12VDC	WALL	W/ (2) 7 WATT LED LAMP HEADS, CAPACITY FOR REMOTE HEADS WHERE APPLICABLE
XI	EXIT SIGN - NEMA 4X RATED	EVENUTE	TVALEMR-UJ-WSD	LED	4	120V/12VDC	WALL	
X2	DUAL REMOTE HEADS - NEMA 4X RATED	EVENUTE	PRW-LED-2MW	LED	-	12VDC	WALL	



- DRAWING NOTES:**
1. NEW LIGHT SWITCH FOR EXISTING WALL MOUNTED FIXTURES. INTERCEPT CIRCUIT AND CONNECT THROUGH SWITCH (FED FROM REAR BAY PANEL BAYS, CONNECT WITH 30' W/ INSURD IN 34'0).
 2. NEW LIGHT SWITCH FOR NEW PENDANT MOUNTED FIXTURES. INTERCEPT CIRCUIT AND CONNECT THROUGH SWITCH (FED FROM REAR BAY PANEL BAYS, CONNECT WITH 30' W/ INSURD IN 34'0).
 3. CONNECT NEW WALL MOUNTED EMERGENCY LIGHTS TO UNSWITCHED PORTION OF LIGHTING CIRCUIT USED FOR NEW OVERHEAD X-LIGHTS. CONNECT NEW EMERGENCY FIXTURES WITH 30' W/ INSURD IN 34'0.

SWIFTWATER BUS WASH DESIGN SERVICES
134 MCTA DRIVE, SWIFTWATER, PA 18370

MONROE COUNTY TRANSPORTATION AUTHORITY

NO. | DATE | DESCRIPTION

PERMIT SUBMITTAL

PROJECT NUMBER: 0660091

DESIGNED BY: C/JG | CHECKED BY: R/LP

DATE: 05/28/2020 | DRAWING TITLE: ELECTRICAL

NEW WORK - LIGHTING

DRAWING NO.: SHEET 104 OF 100

E-200

FIRST FLOOR PLAN
SCALE: 1/8" = 1'-0"





REV.	DATE	DESCRIPTION

PERMIT SUBMITTAL

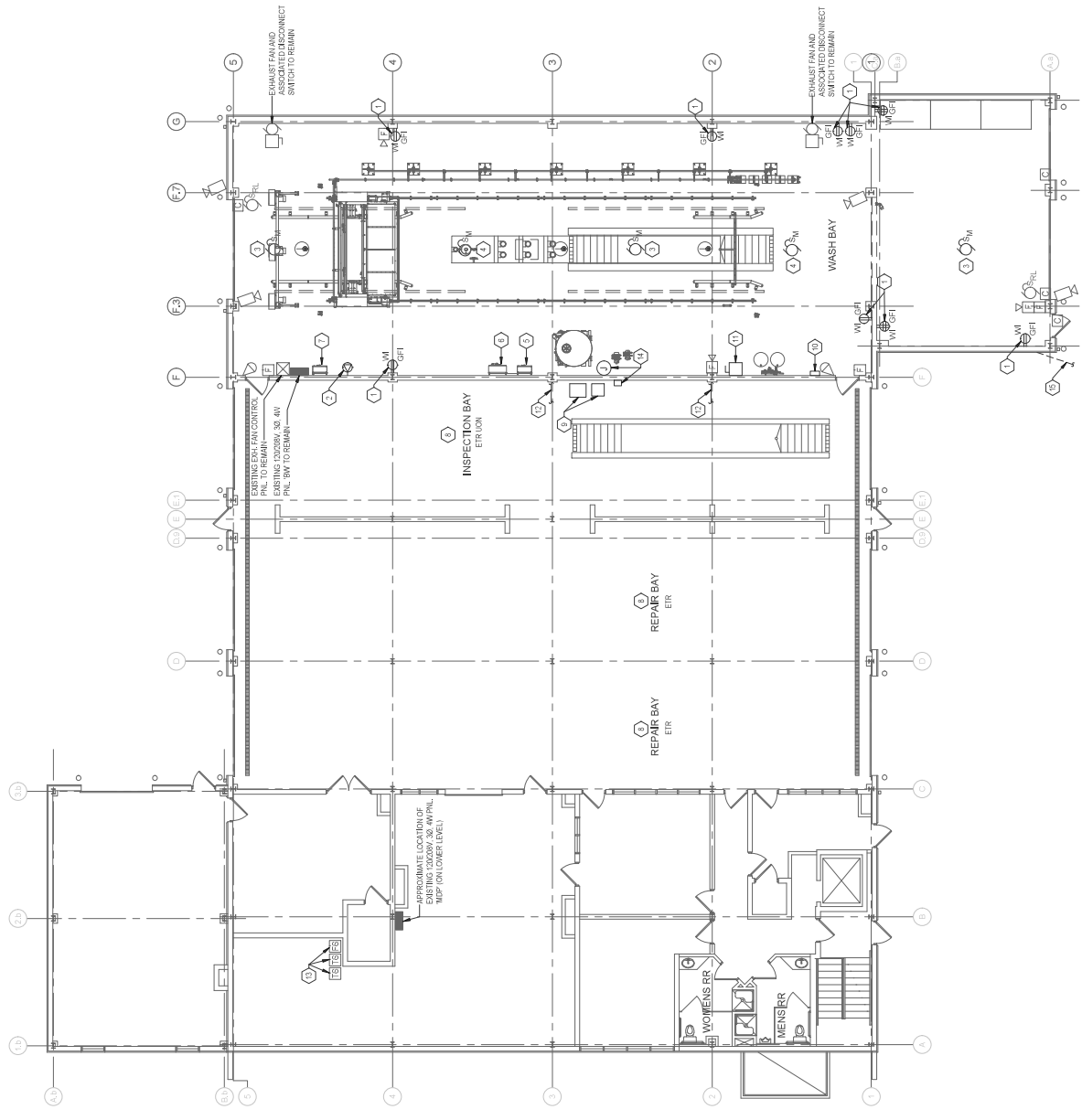
PROJECT NUMBER: 066091	DESIGNED: C/JG	CHECKED: C/JG	DATE: 05/28/2020
MODELLED: C/JG	R/LP	DRAWING TITLE: ELECTRICAL	DRAWING NO. OF PAGES: NEW WORK - POWER

ELECTRICAL
 NEW WORK - POWER
 SHEET NO. OF PAGES
E-201

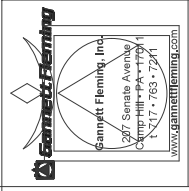


DRAWING NOTES:

1. REPLACE EXISTING RECEIPTS/COVERPLATE WITH KEY/QT TYPE RECEIPTS & WEATHER-PROOF TYPE PHASE TYPE COVER.
2. REPLACE EXISTING WELDING RECEIPTS AND BACKBOX. PROVIDE NEW NEMA 4X SURFACE MOUNTED JUNCTION BOX W/ MANUFACTURER'S FACT ACCEPTABLE VOLTAGE RATING AND CONFIGURATION AND W/ A/C ACCORDANCE.
3. NEW VERTICAL UNIT HEATER WITH HYDROMEC-HEATER UNIT. PROVIDE 200 AMP CIRCUIT BREAKER IN PANEL B/W AND CONNECT WITH 3/4" EMT. PROVIDE 300V NEMA 4X DISCONNECT ADJACENT TO CEILING MOUNTED UNIT.
4. CEILING FAN. PROVIDE 300 AMP CIRCUIT BREAKER IN PANEL B/W AND 200 AMP CIRCUIT BREAKER IN PANEL B/W AND CONNECT WITH 3/4" EMT. PROVIDE 300V NEMA 4X DISCONNECT ADJACENT TO CEILING MOUNTED UNIT. PROVIDE 300V NEMA 4X DISCONNECT ADJACENT TO CEILING MOUNTED UNIT. PROVIDE 300V NEMA 4X DISCONNECT ADJACENT TO CEILING MOUNTED UNIT. PROVIDE 300V NEMA 4X DISCONNECT ADJACENT TO CEILING MOUNTED UNIT.
5. NEW BUS WASH CONTROL MOTOR STARTER PANEL. REFERENCE DRAWING E-201 FOR ELECTRICAL FEED.
6. NEW MOTOR STARTER PANEL. REFERENCE DRAWING E-201 FOR ELECTRICAL FEED.
7. NEW LOWER CONTROL PANEL. REFERENCE DRAWING E-201 FOR ELECTRICAL FEED.
8. ANY NEW CONDUIT WIRING IN THE MAINTENANCE BAYS SHALL BE A MINIMUM OF 18" FROM THE CEILING.
9. TRANSFORMERS MOUNTED ON PLATFORM 14' A.F.F. PER DRAWING NOTES ON DRAWING E-201 AND DETAIL SHOWN ON STRUCTURAL DRAWING S-05.
10. OIL WATER SEPARATOR PANEL. PROVIDE 300 AMP CIRCUIT BREAKER IN PANEL B/W AND 200 AMP CIRCUIT BREAKER IN PANEL B/W AND CONNECT WITH 3/4" EMT. PROVIDE 300V NEMA 4X DISCONNECT ADJACENT TO CEILING MOUNTED UNIT. PROVIDE 300V NEMA 4X DISCONNECT ADJACENT TO CEILING MOUNTED UNIT.
11. 200V 3Ø 1Ø NEMA 4X DISCONNECT SWITCH FOR LEAN WATER HEATER. PROVIDE 300 AMP CIRCUIT BREAKER IN PANEL B/W AND CONNECT WITH 3/4" EMT. PROVIDE 300V NEMA 4X DISCONNECT ADJACENT TO CEILING MOUNTED UNIT.
12. PROVIDE CONDUIT RELOCATION ON CEILING STRUCTURAL STEEL TO MAINTAIN CLEARANCE FROM EXISTING WIRING AND CONDUIT. MAINTAIN MECHANICAL ROOM REFERENCE DRAWING P-111.
13. RECONNECT EXISTING FIRE ALARM FLOW SWITCHES AND TAMPERS TO EXISTING FIRE ALARM CONTROL PANEL. ANY UNDESIRABLE MECHANICAL ROOM REFERENCE DRAWING P-111.
14. FLOW SWITCH FOR FIRE WASH AND REMOTE ALARM. PROVIDE 1Ø 240V 3Ø 1Ø NEMA 4X DISCONNECT SWITCH FOR LEAN WATER HEATER. PROVIDE 300 AMP CIRCUIT BREAKER IN PANEL B/W AND CONNECT WITH 3/4" EMT. PROVIDE 300V NEMA 4X DISCONNECT ADJACENT TO CEILING MOUNTED UNIT.
15. UNDERGROUND 1" CONDUIT (CONCRETE ENCASED) TO OIL WATER SEPARATOR (REFERENCE NOTE #10 ABOVE)



FIRST FLOOR PLAN
 SCALE: 1/8" = 1'-0"



SWIFTWATER BUS WASH DESIGN SERVICES
 134 MCTA DRIVE, SWIFTWATER, PA 18370
 MONROE COUNTY TRANSPORTATION AUTHORITY

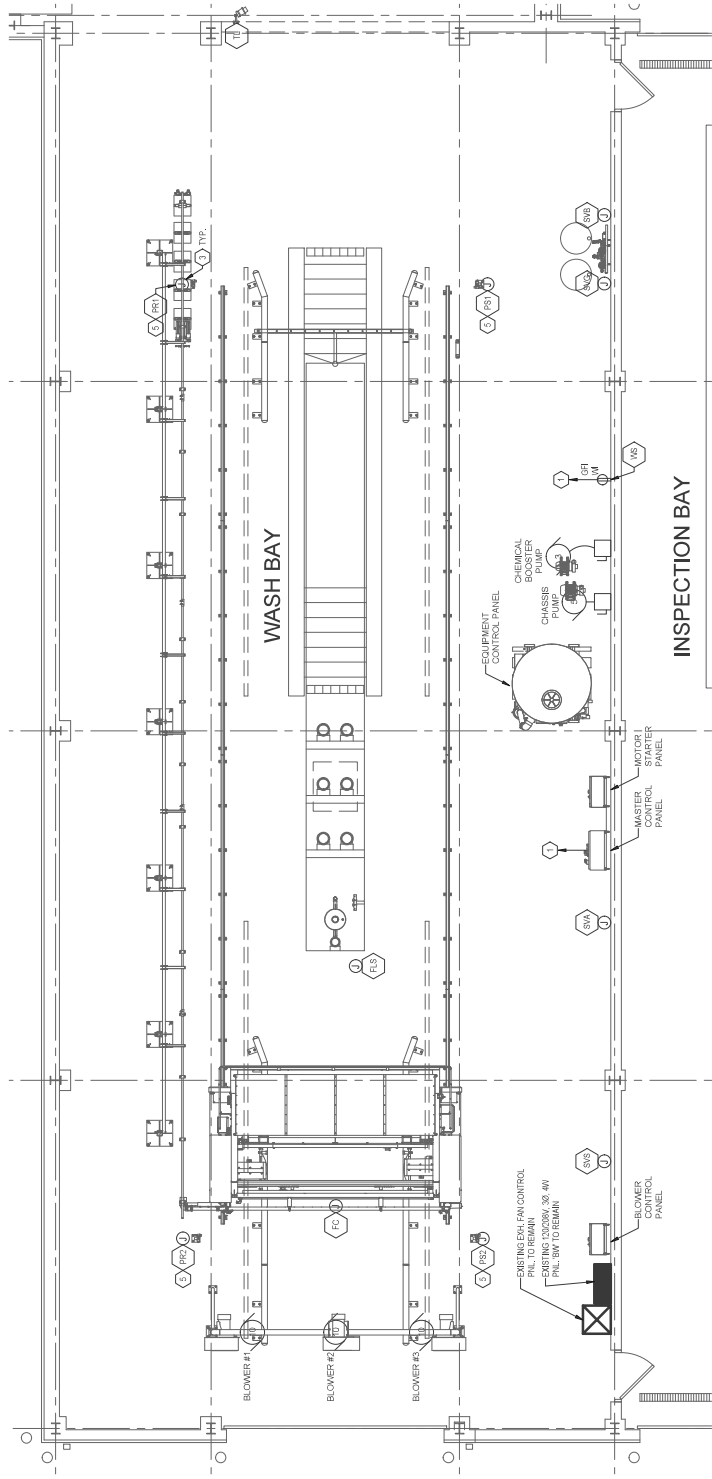


REV.	DATE	DESCRIPTION

PERMIT SUBMITTAL
 PROJECT NUMBER: 066091
 DESIGNED: C-JG
 CHECKED: RLP
 DATE: 05/28/2020
 DRAWING TITLE: ELECTRICAL

EQUIPMENT - POWER
 SHEET NO. OF: 100
E-300

- DRAWING NOTES:**
- PROVIDE NEW 200 CIRCUIT BREAKER IN PANEL BAY. CONNECT WITH 2#12, 110' @ 90 IN 3/4" C. NEW CIRCUIT BREAKER SHALL MATCH EXISTING PANEL BREAKER TYPE, MANUFACTURER AND AMP RATING.
 - 30A, 3 POLE, 600V, HEAVY DUTY, NON-FIRED, NEMA 4X DISCONNECT SWITCH
 - NEMA 4X STAINLESS STEEL JUNCTION BOX, SIZE AS REQUIRED.
 - FEED PER DRAWING LAMP ON/LINE.
 - FEED IN UNDERGROUND CONDUIT.



FIRST FLOOR PLAN - BUS WASH BAY
 SCALE: 1/4" = 1'-0"

EQUIPMENT LEGEND

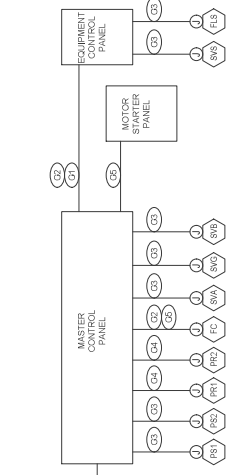
SYMBOL	EQUIPMENT DESCRIPTION
FC	FESTOON CONNECTION (GANTRY CP)
FES	FLOATES - SETTLING PIT
PSR	PHOTO EYE SENSOR - SOURCE
PRR	PHOTO EYE SENSOR - RECEIVER
SVS	SOLENOID VALVE - GANTRY BRUSH
SVG	SOLENOID VALVE - GANTRY CHEMICAL
SYS	SOLENOID VALVE - SETTLING PIT FILL
TL	TRAFFIC LIGHT
VBS	VALVE STOP DRIVER

FEEDER LEGEND - POWER:

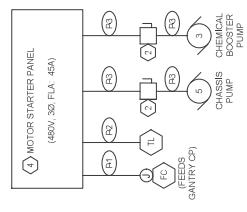
- 1F1 3#4, 110' @ 90 IN 3/4" (480V)
- 1F2 4#12, 110' @ 90 IN 3/4" (120V)
- 1F3 3#12, 110' @ 90 IN 3/4" (480V)

CABLE LEGEND - CONTROL:

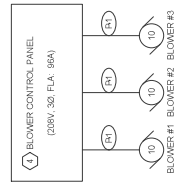
- 1C1 4#16, 110' @ 90 IN 3/4" (240C)
- 1C2 11 CAT. 6 CABLE IN 3/4"
- 1C3 2#16, 110' @ 90 IN 3/4" (240C)
- 1C4 3#16, 110' @ 90 IN 3/4" (240C)
- 1C5 1#16, 110' @ 90 IN 3/4" (240C)



CONTROL PANELS - CONTROL WIRING
 SCALE: NONE



MOTOR STARTER PANEL - POWER
 SCALE: NONE



BLOWER CONTROL PANEL - POWER
 SCALE: NONE



EQUIPMENT CONTROL PANEL - POWER
 SCALE: NONE





Sanyukt Fleming, Inc.
 377 Sanyukt Avenue
 Chester Hill, PA 19381
 N. 717.763.7721
 WWW.SANYUKTFLEMING.COM

SWIFTWATER BUS WASH DESIGN SERVICES
 134 MCTA DRIVE, SWIFTWATER, PA 18370
 MONROE COUNTY TRANSPORTATION AUTHORITY



NO.	DATE	DESCRIPTION

PERMIT SUBMITTAL
 PROJECT NUMBER:
066091
 DESIGNED: C/JG
 CHECKED: R/LP
 DATE: 05/28/2020
 DRAWING TITLE:
ELECTRICAL

REVISIONS
 DETAILS
 SHEET NO. OF: 100
E-301

DRAWING NOTES:

- 1. PROVIDE (1) 1500 CIRCUIT BREAKER IN PANEL BW. NEW BREAKER SHALL MATCH EXISTING PANEL BRANCH BREAKER TYPE MANUFACTURER AND RATING.
- 2. PROVIDE (1) 1750 CIRCUIT BREAKER IN PANEL MDP. NEW BREAKER SHALL MATCH EXISTING PANEL BRANCH BREAKER TYPE MANUFACTURER AND RATING.
- 3. PROVIDE (1) 3000 CIRCUIT BREAKER IN PANEL MDP. NEW BREAKER SHALL MATCH EXISTING PANEL BRANCH BREAKER TYPE MANUFACTURER AND RATING.
- 4. 200A-400V 3 PHASE STEP-UP TRANSFORMER (DELTA-DELTA) WITH 100A PRIMARY AND 400V SECONDARY. SUPPORT SHALL BE FROM CEILING PROVIDE GROUND CONNECTION TO NEAREST STRUCTURAL STEEL W/IR GND.
- 5. 100A 3-POLE 600V HEAVY DUTY FUSED (TAP SESS) NEMA 1 DISCONNECT SWITCH MOUNTED ADJACENT TO TRANSFORMER.
- 6. 100A 3-POLE 600V HEAVY DUTY FUSED (TAP SESS) NEMA 1 DISCONNECT SWITCH MOUNTED ADJACENT TO TRANSFORMER.

- FEEDER LEGEND:**
- 1 300A 1HSR20 IN 1 1/2" C.
 - 2 300A 1HSR20 IN 1 1/2" C.
 - 3 300A 1HSR20 IN 1 1/4" C.
 - 4 300A 1HSR20 IN 1 1/4" C.
 - 5 300A 1HSR20 IN 1 1/4" C.
 - 6 300A 1HSR20 IN 1 1/4" C.

